



Working Instructions

- mechanical -



MT11i, MT11a



CONTENTS

1	Exterior Views.....	4
1.1	MT11i, MT11a.....	4
2	Tools	5
3	Disassembly.....	6
3.1	Battery Cover.....	6
3.2	Cover Left Side Panel & Cover Right Side panel right assembly	7
3.3	Cap Touch flex assy.....	8
3.4	Cover Front Assy	8
3.5	Carrier Inner frame assembly.....	9
3.6	Cable Coax	10
3.7	Carrier Connector support assembly & Main PBA	11
3.8	Display	13
4	Replacement	14
4.1	Battery Cover.....	14
4.2	Cover Left Side Panel	14
4.3	Cover Right Side panel right assembly	14
4.4	Cap Touch flex assy.....	14
4.5	Cover Front Assy	15
4.6	Carrier Inner frame assembly.....	15
4.7	Cable Coax	15
4.8	Carrier Connector support assembly	15
4.9	Display	16
4.10	Camera Key	17
4.11	Carrier Metal LCM Carrier Assembly	19
4.12	Conn Op & Foil 0.0 mmAV tape	20
4.13	Core Unit Label.....	22
4.14	Ear Speaker	24
4.15	Gasket.....	25
4.16	Gasket Conductive 3,8x2,3.....	26
4.17	Gasket LCD Driver	27
4.18	Gasket Microphone gasket.....	28
4.19	Gasket - RGB LED Assembly	29
4.20	Keyflex	30
4.21	Light Guide Flash Lens & Adhesive Flash Led Lens.....	34
4.22	Liquid Indicator	36
4.23	Main Camera and Camera Spacer.....	37
4.24	Micro SD Label	39
4.25	Microphone Net	40



4.26 Multifunc Front Keys.....	41
4.27 On/Off Key	43
4.28 Protective Tape Left.....	45
4.29 Protective Tape Right	46
4.30 Protective Tape Touch FPC.....	47
4.31 RF Tape.....	48
4.32 Shield Can Lid Assy, Main Camera.....	49
4.33 Shield Can Lid BB processor	50
4.34 Shield Can Lid BB secondary	51
4.35 Shield Can Lid BT/WLAN.....	52
4.36 Shield Can Lid GPS.....	53
4.37 Shield Can Lid RF	54
4.38 SIM Open Label	55
4.39 Speaker & Gasket Speaker gasket upper	56
4.40 Touch Panel.....	58
4.41 Volume Key	60
4.42 Water Indicator 3*3.....	61
4.43 Gasket Flash Led	62
4.44 Board Swap	63
4.44.1 Board Swap- Replacement	63
4.44.2 Board Swap – Change Label	63
4.44.3 Board Swap – Customize of Software	63
5 Reassembly.....	64
5.1 Display	64
5.2 Carrier Connector support assembly & Main PBA	65
5.3 Cable Coax	66
5.4 Carrier Inner frame assembly.....	67
5.5 Cover Front Assy	68
5.6 Cap Touch flex assy.....	69
5.7 Cover Left Side Panel & Cover Right Side panel right assembly ...	69
5.8 Battery Cover.....	70
6 Revision History	72

**For general information about mechanical repair related issues, refer to
1220-1333: Generic Repair Manual - mechanical**



1 Exterior Views

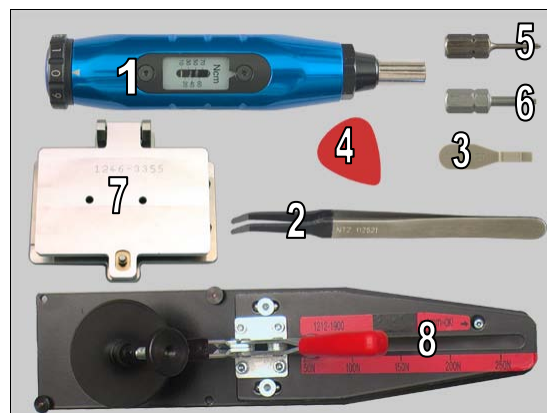
1.1 MT11i, MT11a



2 Tools

SPECIAL TOOLS

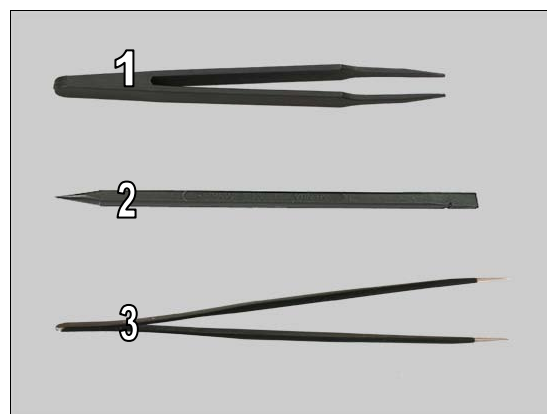
1. Torque Screwdriver
2. Flex Film Assembly Tool
3. Front Opening Tool
4. Guitar Pick
5. Bits(T6)
6. Bits(JCIS No0)
7. Window Pressure Tool
8. Pressure Tool



For part no's on the tools above, refer to the 'Tools Catalogue/Matrix'!

STANDARD TOOLS

1. ESD Tweezers
2. Nylon Pointer
3. Tweezers (ESD-safe & non-metallic)





3 Disassembly

The disassembly is done in the following order:

1. Battery Cover
2. Battery
3. Cover Right Side panel right assembly & Cover Left Side Panel
4. Cap Touch flex assy
5. Cover Front Assy
6. Carrier Inner frame assembly
7. Cable Coax
8. Carrier Connector support assembly
9. Main PBA
10. Display (a) & Carrier Metal LCM Carrier Assembly (b)



3.1 Battery Cover

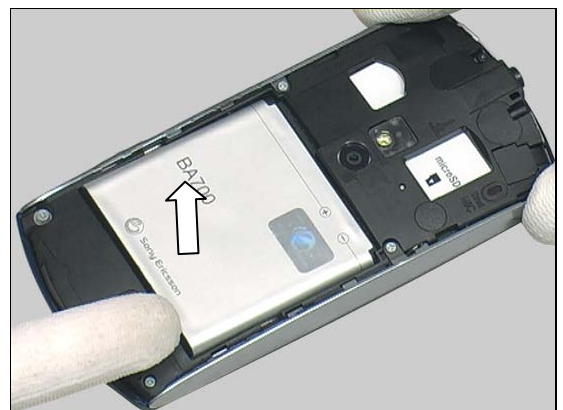
Release the hook of the Battery Cover from the bottom side.



Lift to release the Battery Cover from the bottom side gently.



Lift up the Battery from its cavity by finger.



Disassembly

Remove the Battery.



3.2 Cover Left Side Panel & Cover Right Side panel right assembly

Remove the five screws by a screwdriver with Bits (JCIS No 0).



Remove the one hand strap screw by a screwdriver with Bits (JCIS No 0).



Slide the Guitar Pick to release the hooks of Cover Right Side panel right assembly and then remove it gently.



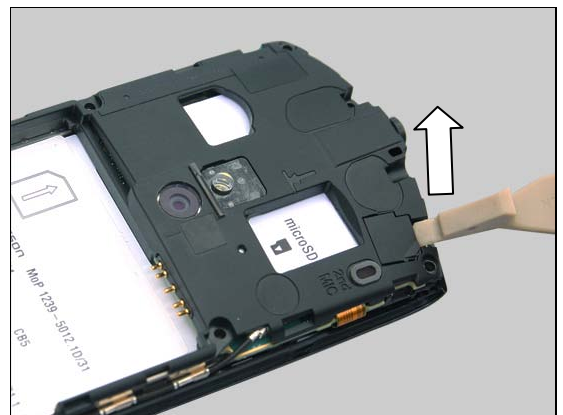
Disassembly

Slide the Guitar Pick to release the hooks of Cover Left Side Panel and then remove it gently.

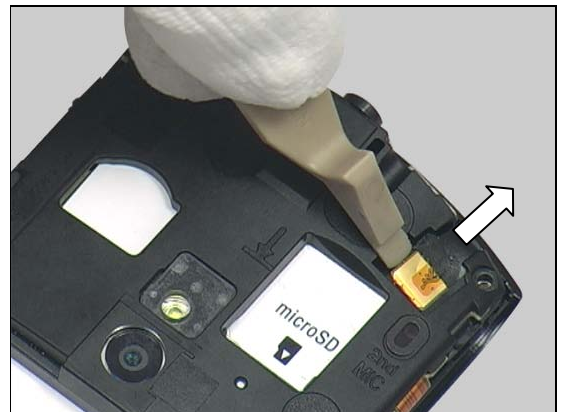


3.3 Cap Touch flex assy

Remove the Cap Touch flex assy with the Front Opening Tool.



Disconnect the Touch Flex BtB connector with the Front Opening Tool gently.



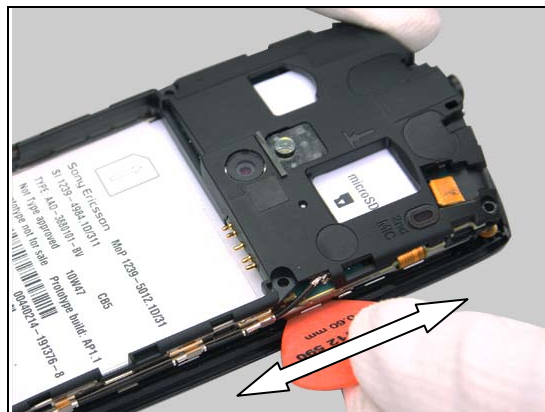
3.4 Cover Front Assy

Slide the bottom by using Guitar Pick

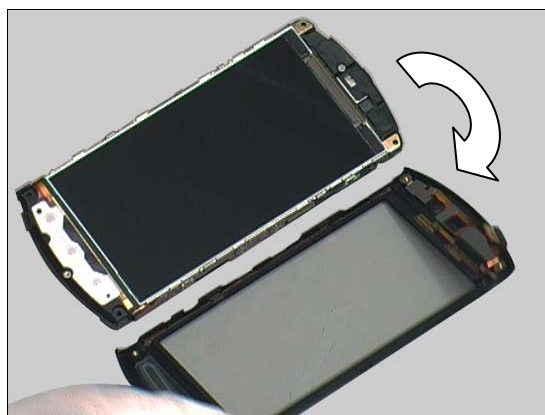


Disassembly

Release the side hook by using Guitar Pick.



Remove the Cover Front Assy gently.



Separate the Cover Front Assy and unit.



3.5 Carrier Inner frame assembly

Remove the one screw by a screwdriver with T5.



Disassembly

Remove the two screws by a screwdriver with T5.



Insert the Guitar Pick between the Carrier Inner frame assembly and Carrier Metal LCM Carrier Assembly.

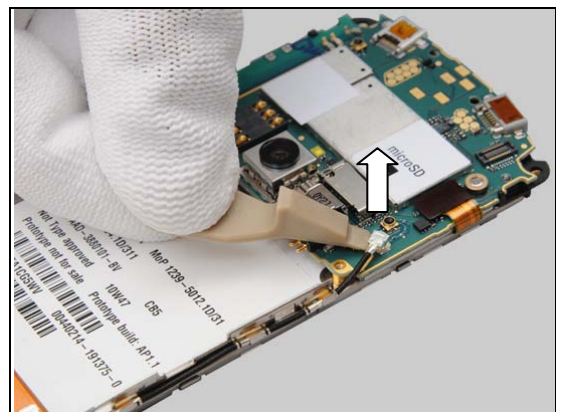


Remove the Carrier Inner frame assembly gently.



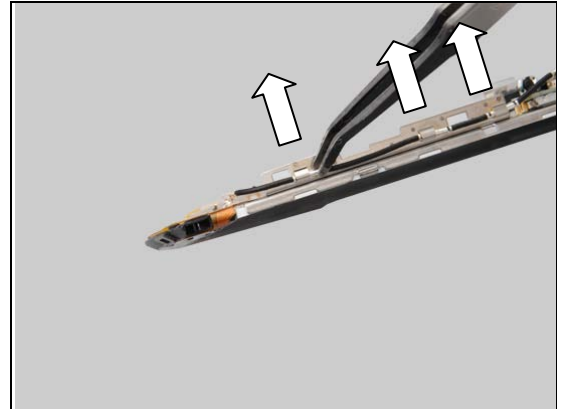
3.6 Cable Coax

Use Front Opening Tool to lift up the connection point of one end of the Cable Coax.

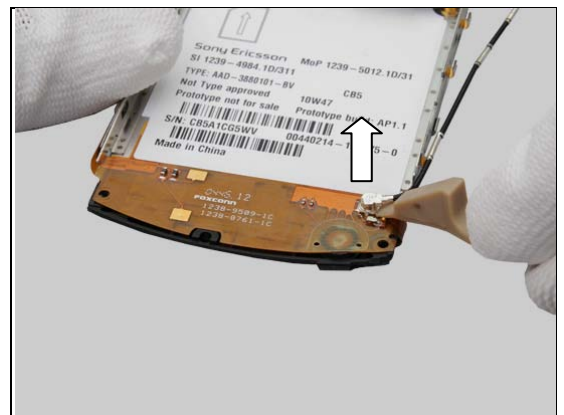


Disassembly

Lift up the Cable Coax at the three fixing sockets.

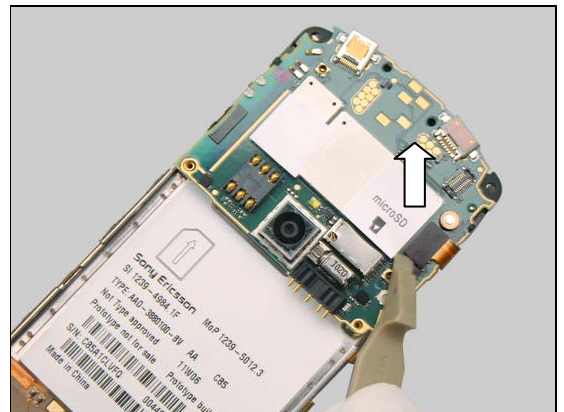


Use Front Opening Tool to lift up another connection point of the other end of the Cable Coax and then remove the Cable Coax.

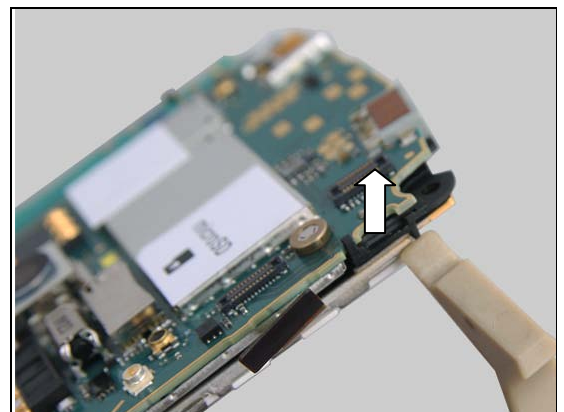


3.7 Carrier Connector support assembly & Main PBA

Unsnap the BtB connector by using the Front Opening Tool.



Unsnap the hook by using the Front Opening Tool.

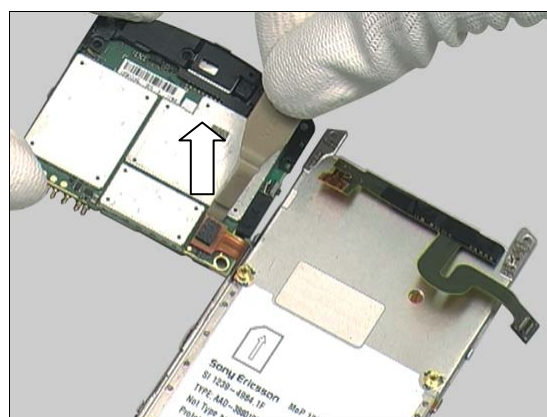


Disassembly

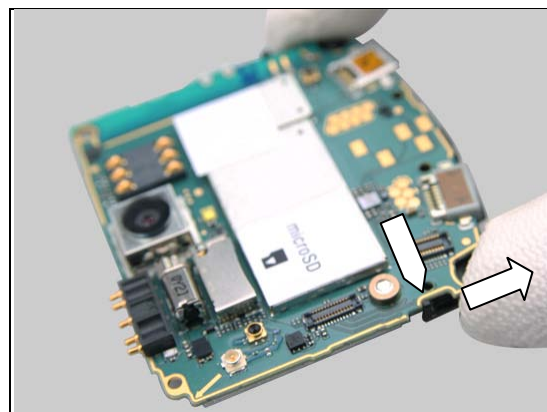
Remove the PBA unit.



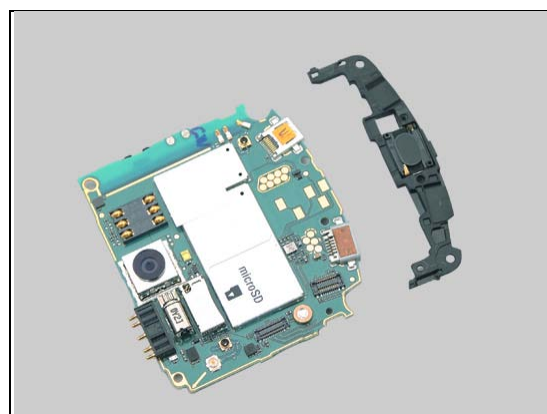
Unsnap the BtB connector by using a Front Opening Tool.



Push the hook to concave by fingers, and then remove it gently.



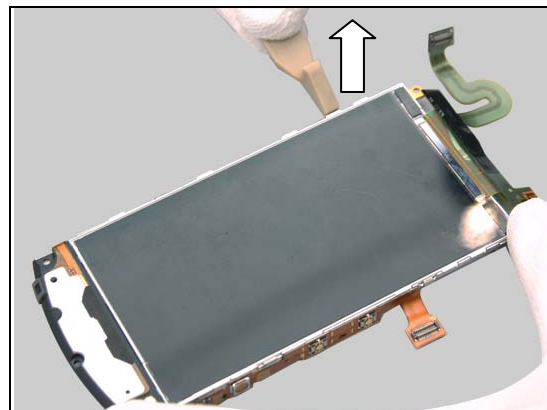
Separate the Carrier Connector support assembly and Main PBA.



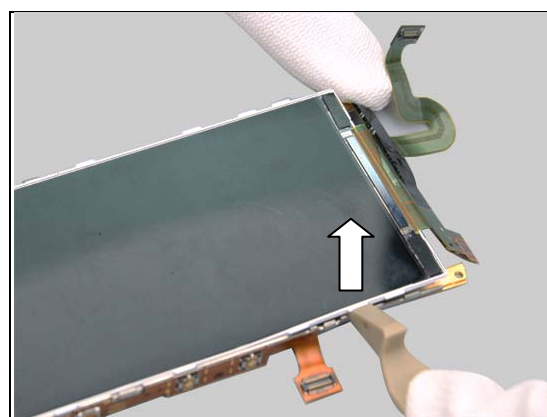
Disassembly

3.8 Display

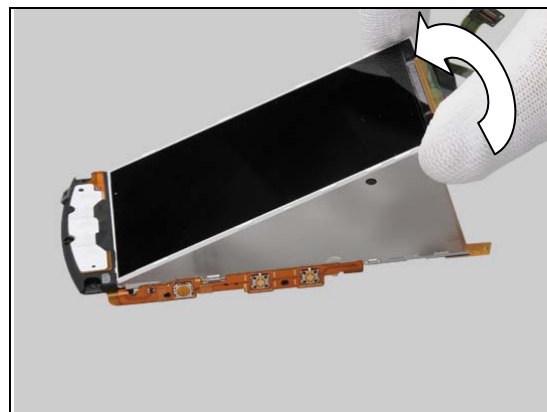
Insert the Front Opening Tool to release the Display.



Do the same at the other side.



Lift up the Display with the proper direction and remove it.





4 Replacement

4.1 Battery Cover

Follow the 3.1 Disassembly instructions!

Prepare the new Battery Cover.

Follow the 5.8 Reassembly instructions!

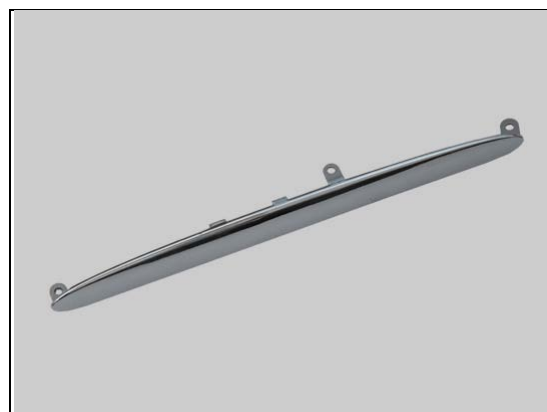


4.2 Cover Left Side Panel

Follow the 3.1 – 3.2 Disassembly instructions!

Prepare the new Cover Left Side Panel.

Follow the 5.7 – 5.8 Reassembly instructions!



4.3 Cover Right Side panel right assembly

Follow the 3.1 – 3.2 Disassembly instructions!

Prepare the new Cover Right Side panel right assembly.

Follow the 5.7 – 5.8 Reassembly instructions!

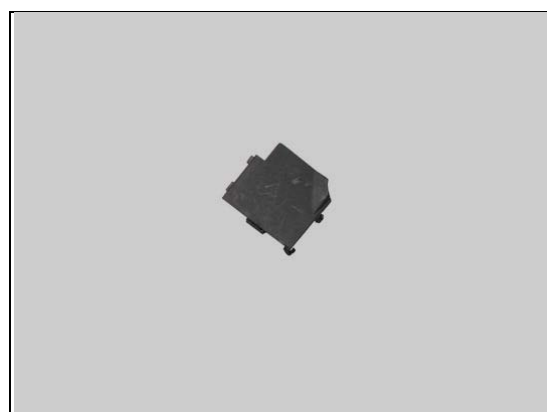


4.4 Cap Touch flex assy

Follow the 3.1 – 3.3 Disassembly instructions!

Prepare the new Cap Touch flex assy.

Follow the 5.6 – 5.8 Reassembly instructions!



Replacement

4.5 Cover Front Assy

Follow the 3.1 – 3.4 Disassembly instructions!

Follow the 4.41 Removal instructions!

Follow the 4.27 Removal instructions!

Prepare the new Cover Front Assy.

Follow the 4.27 Installation instructions!

Follow the 4.41 Installation instructions!

Follow the 5.5 – 5.8 Reassembly instructions!



4.6 Carrier Inner frame assembly

Follow the 3.1 – 3.5 Disassembly instructions!

Prepare the new Carrier Inner frame assembly.

Follow the 5.5 – 5.8 Reassembly instructions!



4.7 Cable Coax

Follow the 3.1 – 3.6 Disassembly instructions!

Prepare the new Cable Coax.

Follow the 5.3 – 5.8 Reassembly instructions!



4.8 Carrier Connector support assembly

Follow the 3.1 – 3.7 Disassembly instructions!

Prepare the new Carrier Connector support assembly.

Follow the 5.2 – 5.8 Reassembly instructions!



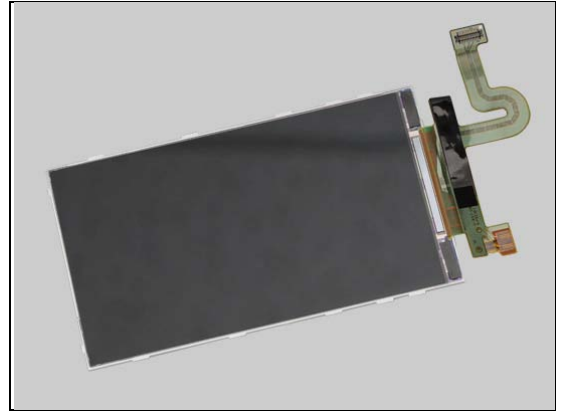
Replacement

4.9 Display

Follow the 3.1 – 3.8 Disassembly instructions!

Prepare the new Display.

Follow the 5.1 – 5.8 Reassembly instructions!



Replacement

4.10 Camera Key

Follow the 3.1 – 3.2 Disassembly instructions!

Carry out the Removal as described below.

Prepare the new Camera Key.

Carry out the Installation as described below.

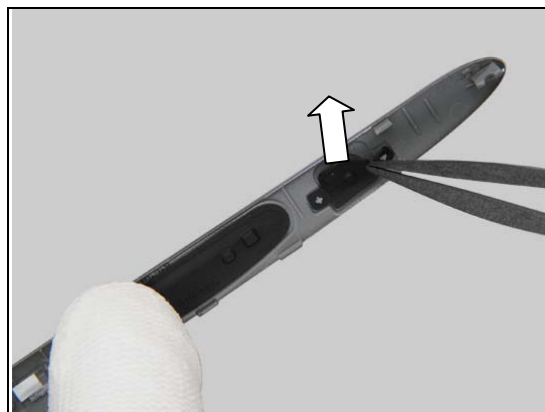
Follow the 5.7 – 5.8 Reassembly instructions!

REMOVAL

Push the Camera Key from outside.



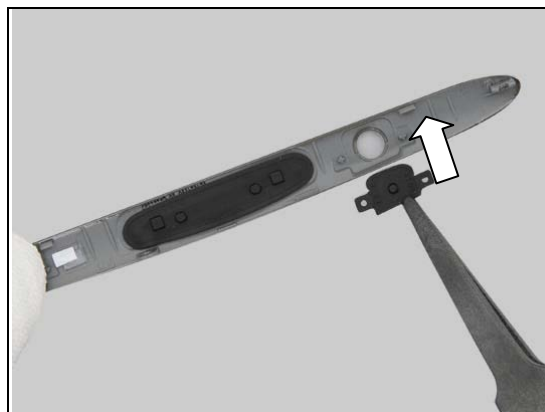
Remove the Camera Key from inside.



INSTALLATION

Press the Camera Key into its proper position.

Note the guiding column!



Replacement: Camera Key

Press to assure its position.



Replacement

4.11 Carrier Metal LCM Carrier Assembly

Follow the 3.1 – 3.8 Disassembly instructions!

Follow the 4.13, 4.21 Removal instructions!

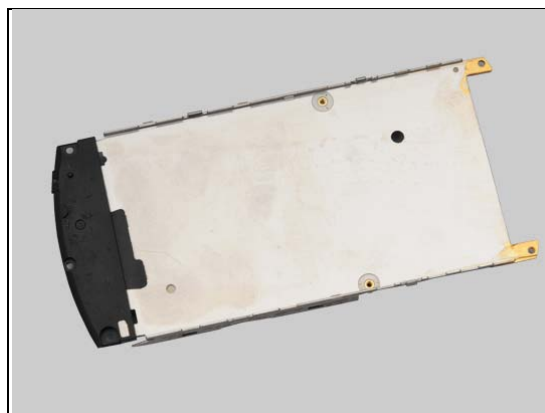
Carry out the Removal as described below.

Prepare the new Carrier Metal LCM Carrier Assembly.

Carry out the Installation as described below.

Follow the 4.21, 4.13, 4.19 Installation instructions!

Follow the 5.1 – 5.8 Reassembly instructions!





Replacement

4.12 Conn 0p & Foil 0.0 mmAV tape

Follow the 3.1 – 3.5 Disassembly instructions!

Carry out the Removal as described below.

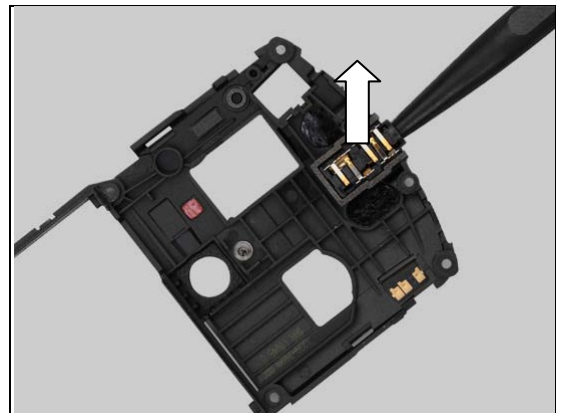
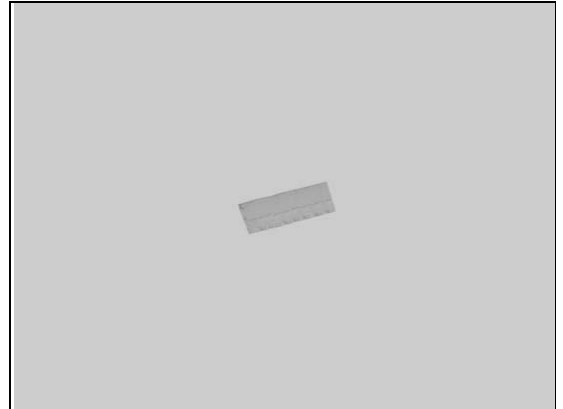
Prepare the new Foil 0.0 mmAV tape.

Carry out the Installation as described below.

Follow the 5.4 – 5.8 Reassembly instructions!

REMOVAL

Insert and push against the Conn 0p from the back side by using a Nylon Pointer.



Tear off the Foil 0.0 mmAV tape by using a pair of ESD tweezers.



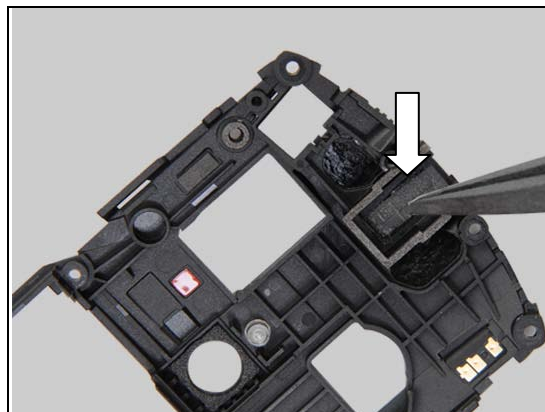
INSTALLATION

Prepare the new Foil 0.0 mmAV tape in place.



Replacement: Conn 0p & Foil 0.0 mmAV tape

Press to attach it in the cavity.

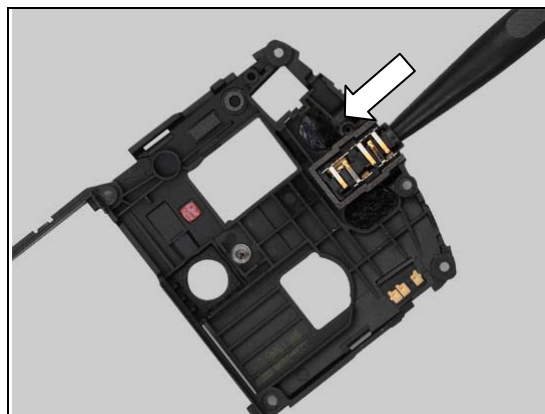


Place the new Conn 0p in place.



Press to assure the attachment.

Do not press on the pads!





Replacement

4.13 Core Unit Label

Follow the 3.1 Disassembly instructions!

Carry out the Removal as described below.

Prepare the Core Unit Label.

Carry out the Installation as described below.

Follow the 5.8 Reassembly instructions!

REMOVAL

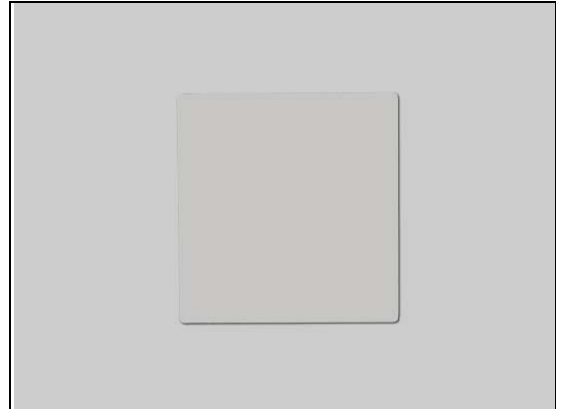
Read the old Label Core Unit and write the information into the 'LabelMake' program.

Carefully remove the Label by using the Flex Film Assy Tool.

INSTALLATION

Check that the proper label format is loaded in the Zebra printer and write a new Label by using the 'LabelMake' software.

One label only is allowed!



Replacement: Core Unit Label

Press along the surface to make Label securely attached.



Replacement

4.14 Ear Speaker

Follow the 3.1 – 3.7 Disassembly instructions!

Carry out the Removal as described below.

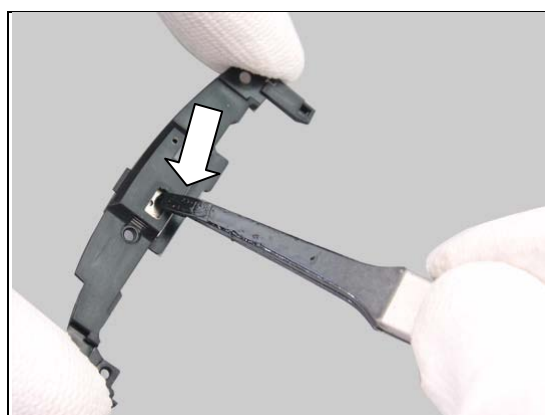
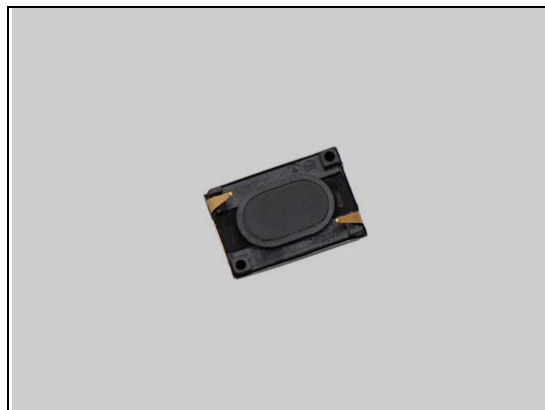
Prepare the new Ear Speaker.

Carry out the Installation as described below.

Follow the 5.2 – 5.8 Reassembly instructions!

REMOVAL

Push through the hole on the back side of Carrier Connector support assembly and remove the Ear Speaker.



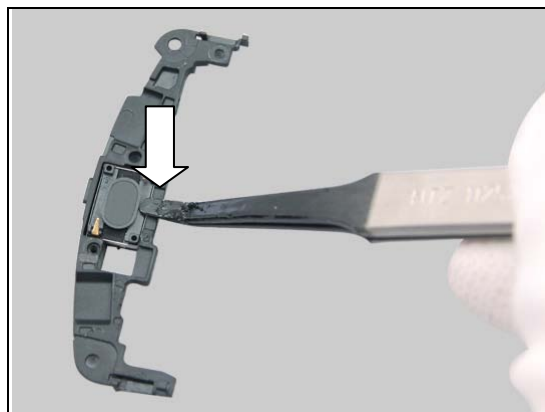
INSTALLATION

Place the Ear Speaker with proper direction into the cavity.



Press the Ear Speaker into its proper position.

Do not press on the pads!





Replacement

4.15 Gasket

Follow the 3.1 – 3.7 Disassembly instructions!

Carry out the Removal as described below.

Prepare the new Gasket.

Carry out the Installation as described below.

Follow the 5.2 – 5.8 Reassembly instructions!

REMOVAL

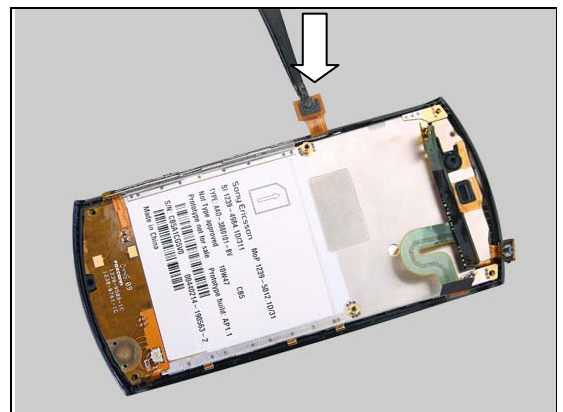
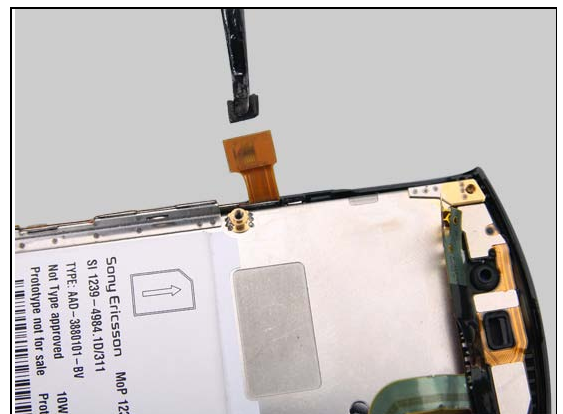
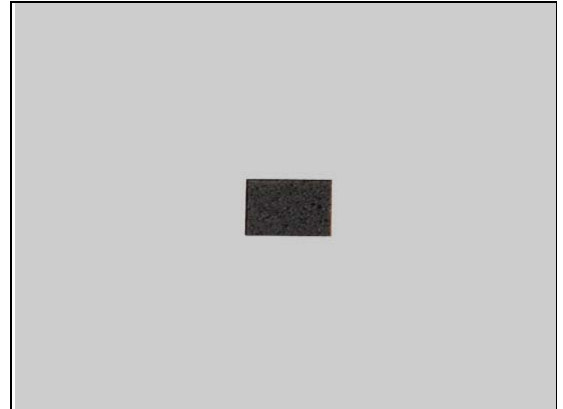
Tear off the Gasket with the Flex Film Assy Tool.

Scrap! Not to be reused!

INSTALLATION

Stick the Gasket on the proper position.

Press to assure its attachment.





Replacement

4.16 Gasket Conductive 3,8x2,3

Follow the 3.1 – 3.7 Disassembly instructions!

Carry out the Removal as described below.

Prepare the new Gasket Conductive 3,8x2,3.

Carry out the Installation as described below.

Follow the 5.2 – 5.8 Reassembly instructions!

REMOVAL

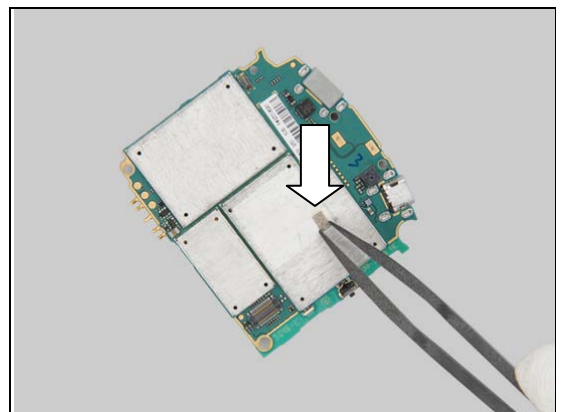
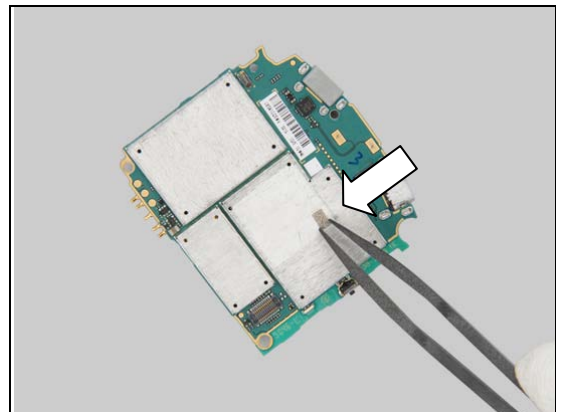
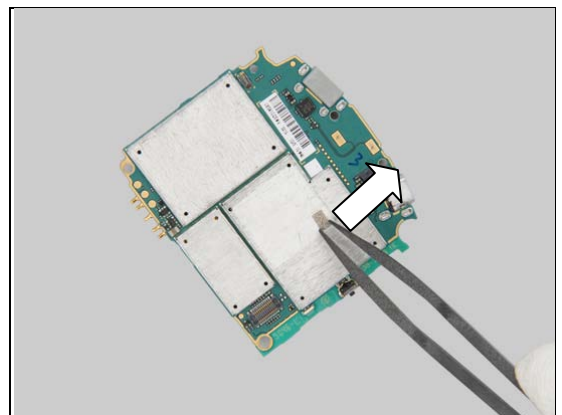
Snap the Gasket Conductive 3,8x2,3 and remove it from Shield Can Lid

Scrap! Not to be reused!

INSTALLATION

Stick the new Gasket Conductive 3,8x2,3 back to the Shield Can Lid.

Press to assure its attachment.





Replacement

4.17 Gasket LCD Driver

Follow the 3.1 – 3.4 Disassembly instructions!

Carry out the Removal as described below.

Prepare the new Gasket LCD Driver.

Carry out the Installation as described below.

Follow the 5.5 – 5.8 Reassembly instructions!

REMOVAL

Tear off the Gasket LCD Driver with the Flex Film Assy Tool.

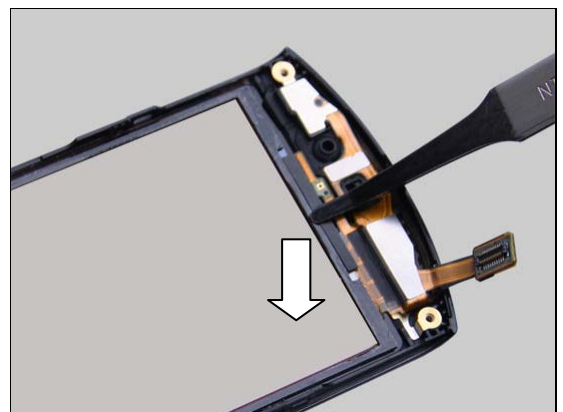
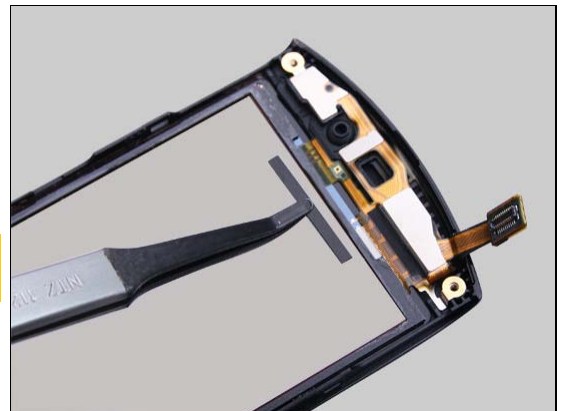
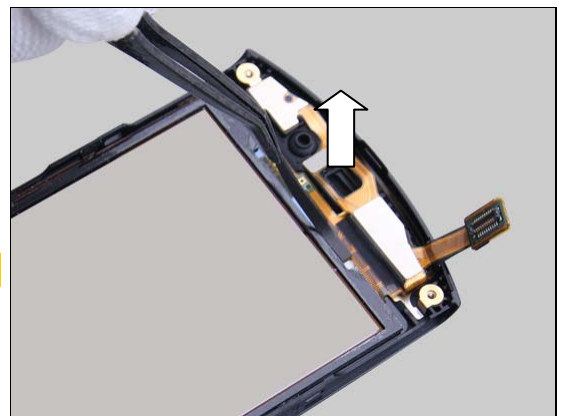
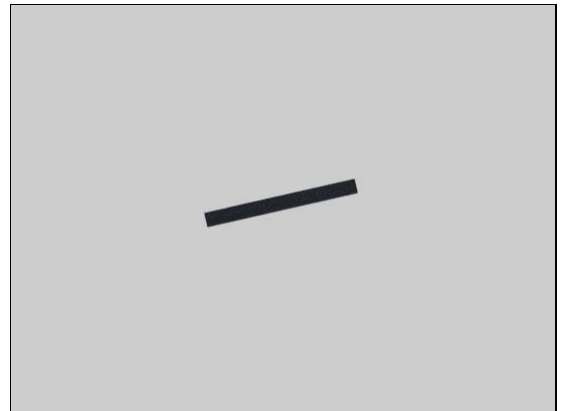
Scrap! Not to be reused!

INSTALLATION

Stick the Gasket LCD Driver on the proper position.

Put it in the middle of the gap on top of the gasket of touch panel!

Press to assure its attachment.





Replacement

4.18 Gasket Microphone gasket

Follow the 3.1 – 3.8 Disassembly instructions!

Follow the 4.21 Removal instructions!

Carry out the Removal as described below.

Prepare the new Gasket Microphone gasket.

Carry out the Installation as described below.

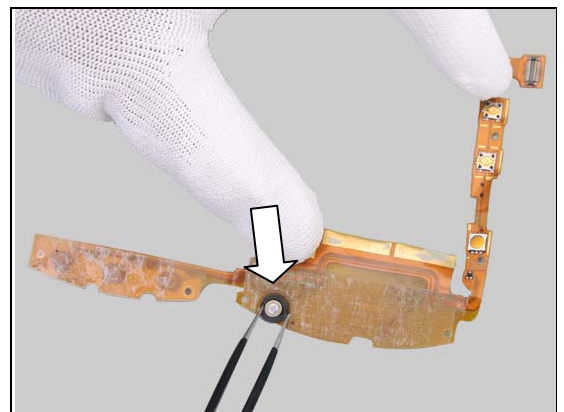
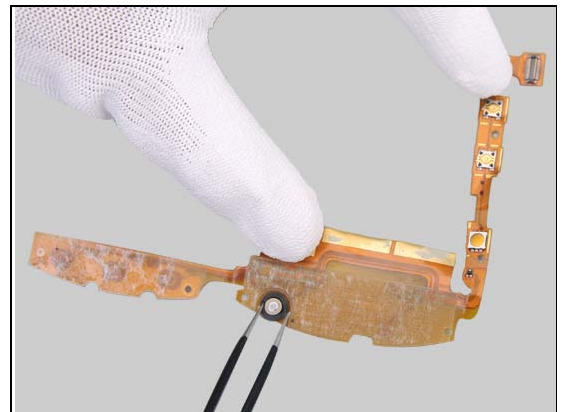
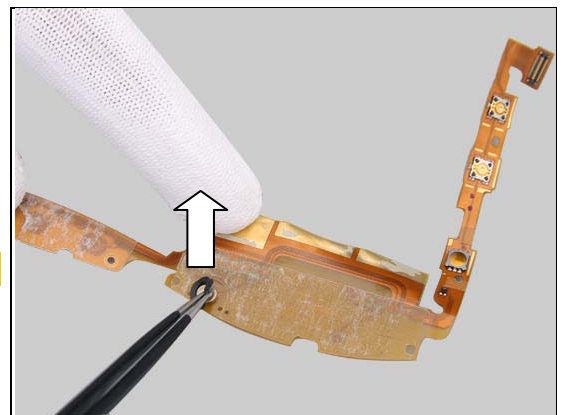
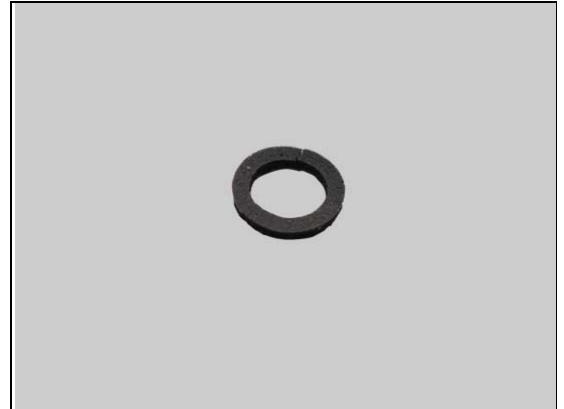
Follow the 4.21 Installation instructions!

Follow the 5.1 – 5.8 Reassembly instructions!

REMOVAL

Tear off the Gasket Microphone gasket from the Keyflex.

Scrap! Not to be reused!



INSTALLATION

Place the new Gasket Microphone gasket in place.

Press to assure its attachment.

Replacement

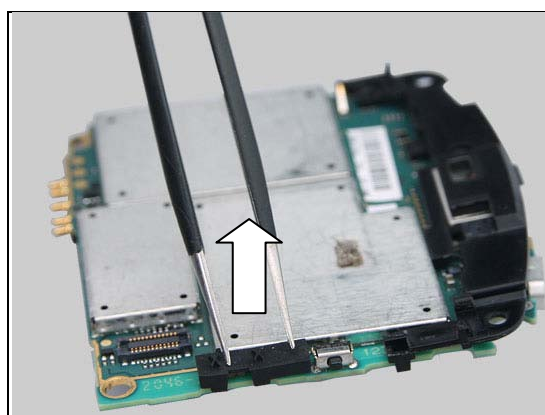
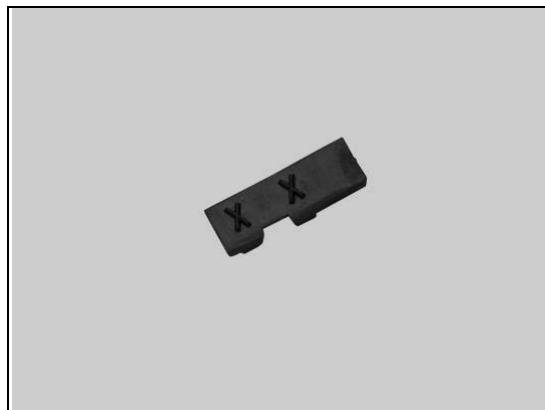
4.19 Gasket - RGB LED Assembly

Follow the 3.1 – 3.7 Disassembly instructions!
Carry out the Removal as described below.
 Prepare the new Gasket - RGB LED Assembly.
Carry out the Installation as described below.
Follow the 5.2 – 5.8 Reassembly instructions!

REMOVAL

Remove it with using a pair of tweezers.

Scrap! Not to be reused!



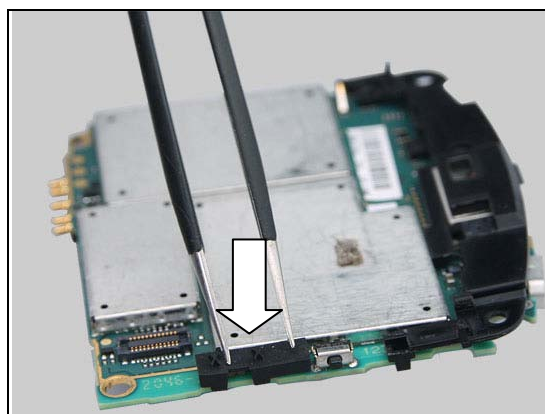
INSTALLATION

Place the new Gasket - RGB LED Assembly in place.

Guiding with the LED slot!



Press to assure its proper position





Replacement

4.20 Keyflex

Follow the 3.1 – 3.7 Disassembly instructions!

Follow the 4.13 Removal instructions!

Carry out the Removal as described below.

Prepare the new Keyflex.

Carry out the Installation as described below.

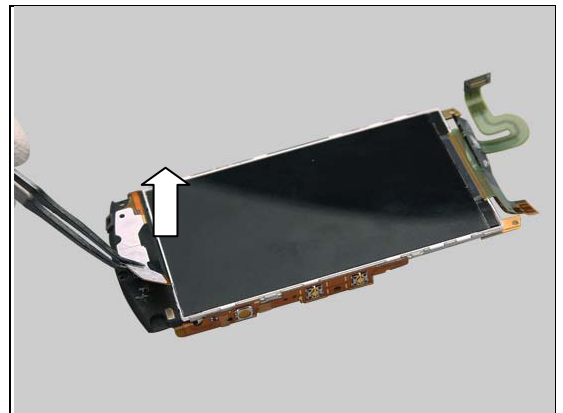
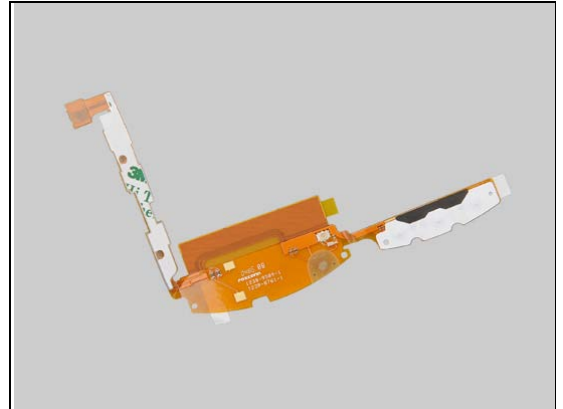
Follow the 4.19 Installation instructions!

Follow the 4.13 Installation instructions!

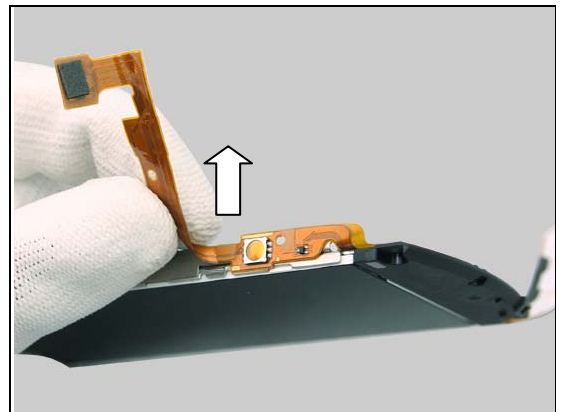
Follow the 5.2 – 5.8 Reassembly instructions!

REMOVAL

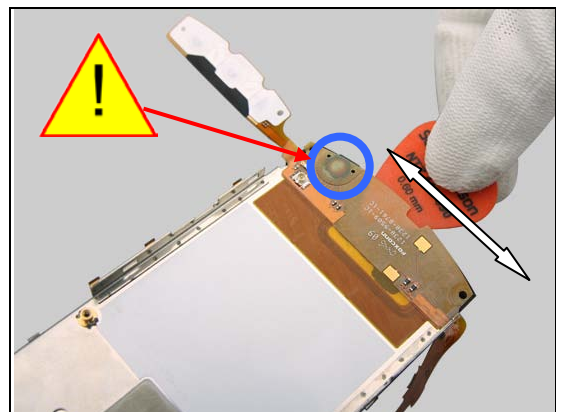
Detach the key dome.



Detach the side key dome.



Detach the bottom of Keyflex with using a Guitar Pick.

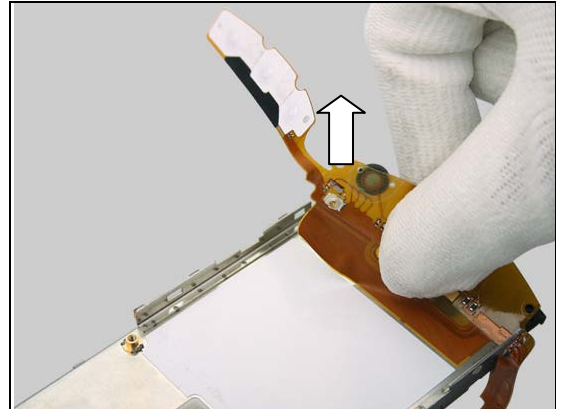




Replacement: Keyflex

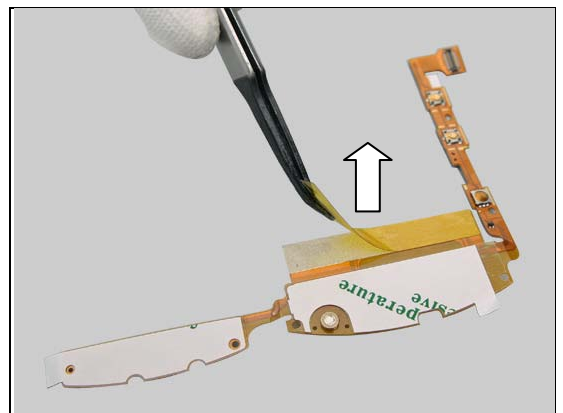
Detach it from the Carrier Metal LCM Carrier Assembly.

Scrap! Not to be reused!

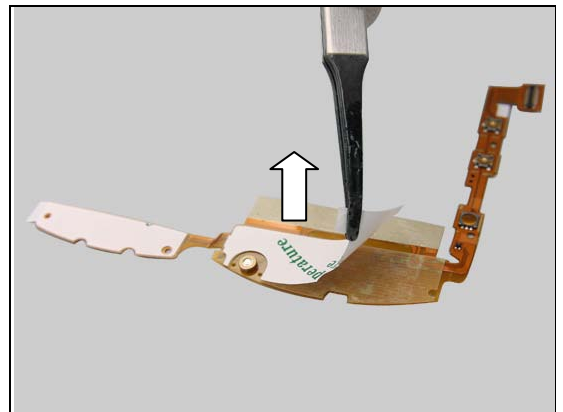


INSTALLATION

Tear off the protection tape.

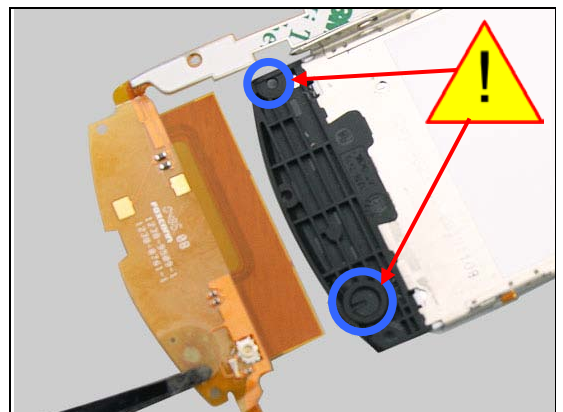


Tear off the protection tape.



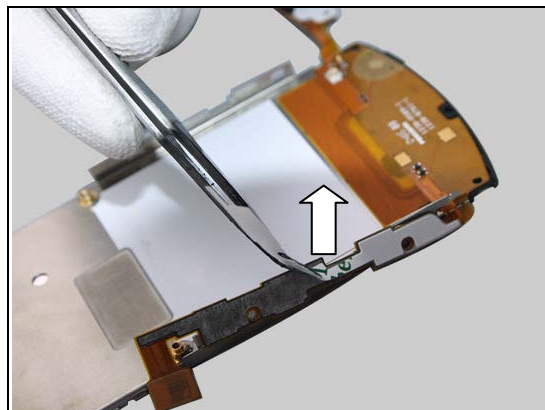
Place the Keyflex in place.

Note the guiding hole and mic slot!

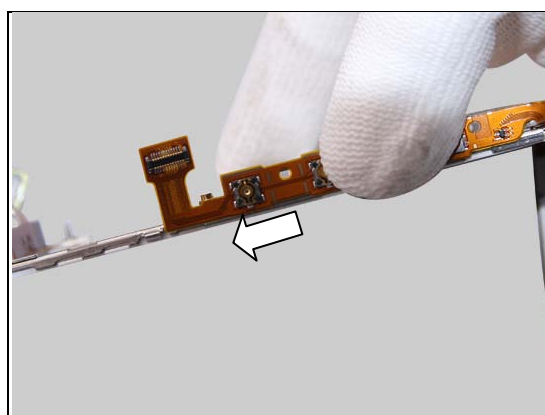


Replacement: Keyflex

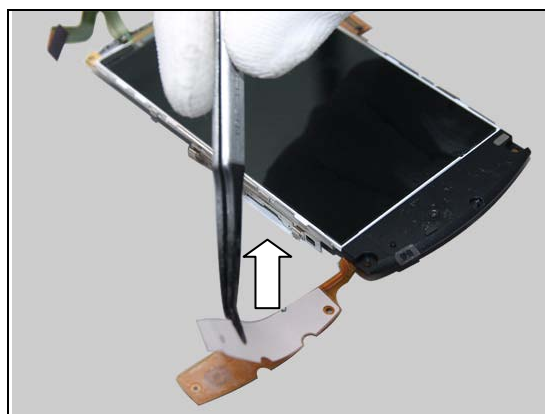
Tear off the tape.



Press along to assure its position and attachment.



Detach the tape.



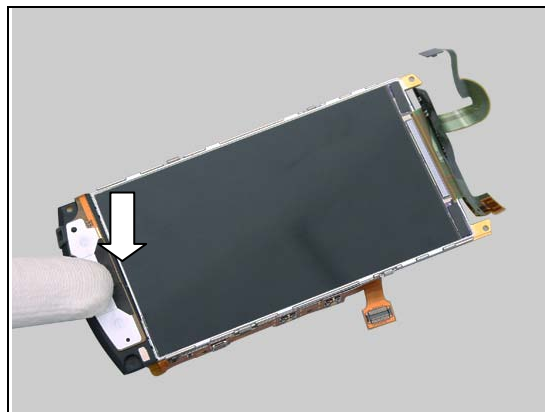
Turn over the key dome and place it in place.

Note the guiding column!



Replacement: Keyflex

Press along to assure its position and attachment.





Replacement

4.21 Light Guide Flash Lens & Adhesive Flash Led Lens

Follow the 3.1 – 3.5 Disassembly instructions!

Carry out the Removal as described below.

Prepare the new Light Guide Flash Lens.

Carry out the Installation as described below.

Follow the 5.4 – 5.8 Reassembly instructions!

REMOVAL

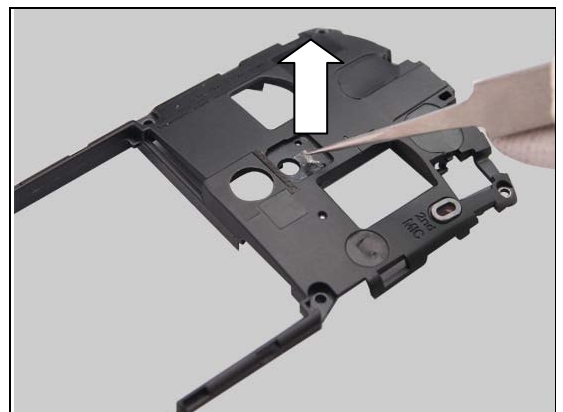
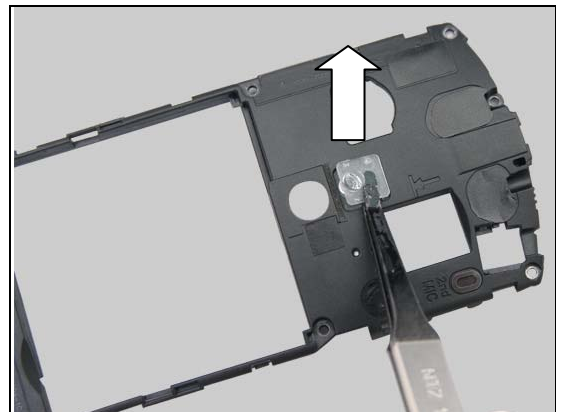
Insert and push against the Light Guide Flash Lens from the back side by using a Nylon Pointer.

Remove the Light Guide Flash Lens by using Flex Film Assembly Tool.

Scrap! Not to be reused!

Tear off the Adhesive Flash Led Lens by using a pair of tweezers.

Scrap! Not to be reused!



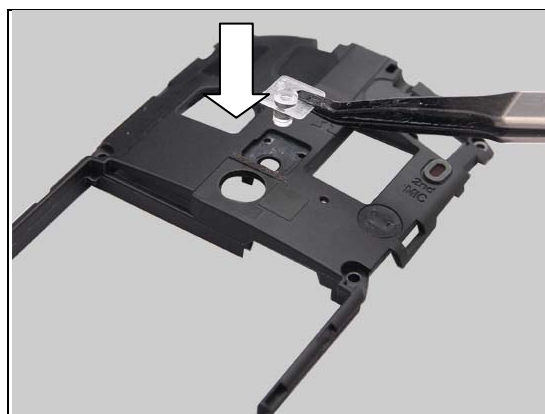
Replacement: Light Guide Flash Lens & Adhesive Flash Led Lens

INSTALLATION

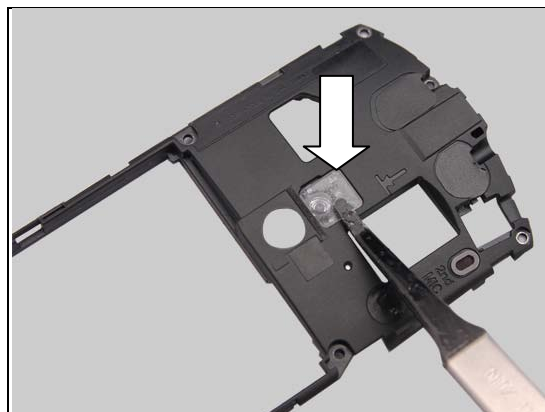
Prepare a new Adhesive Flash Led Lens in place.



Prepare a new Light Guide Flash Lens in place with the proper direction.



Press to snap it into its cavity.



Replacement

4.22 Liquid Indicator

Follow the 3.1 – 3.7 Disassembly instructions!

Carry out the Removal as described below.

Prepare the new Liquid Indicator.

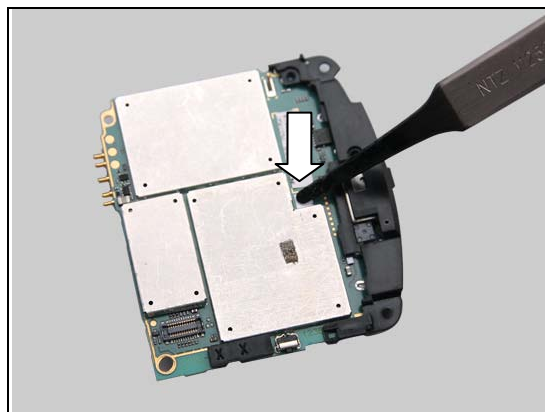
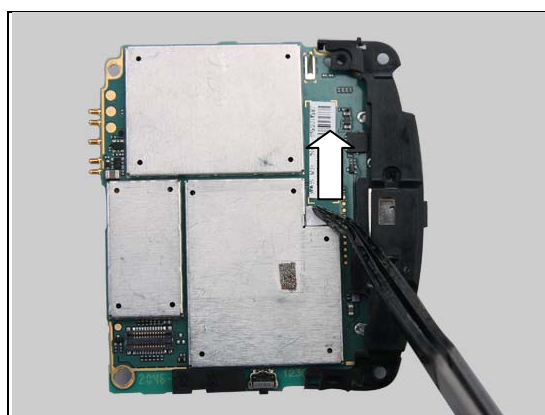
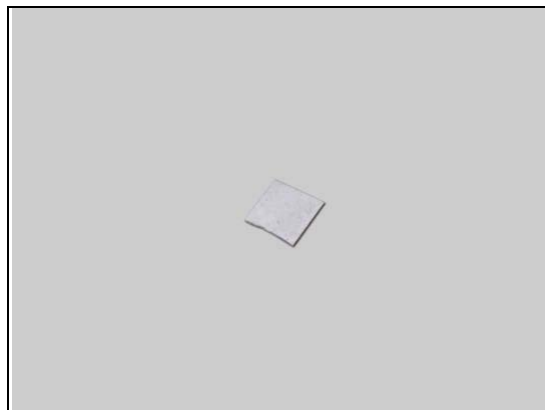
Carry out the Installation as described below.

Follow the 5.2 – 5.8 Reassembly instructions!

REMOVAL

Detach it by using a Flex Film Assy Tool.

Scrap! Not to be reused!



INSTALLATION

Place the new Liquid Indicator in place.

Press to assure its attachment.

Replacement

4.23 Main Camera and Camera Spacer

Follow the 3.1 – 3.7 Disassembly instructions!

Carry out the Removal as described below.

Prepare the new Main Camera and Camera Spacer.

Carry out the Installation as described below.

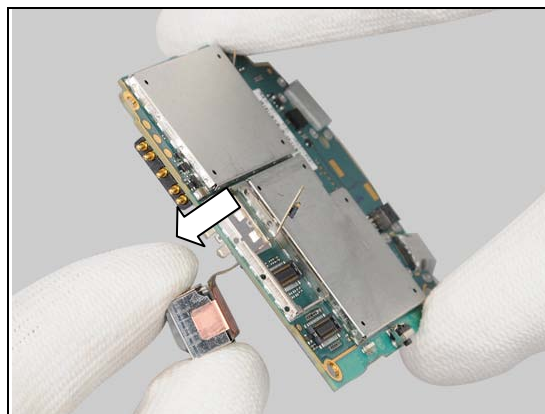
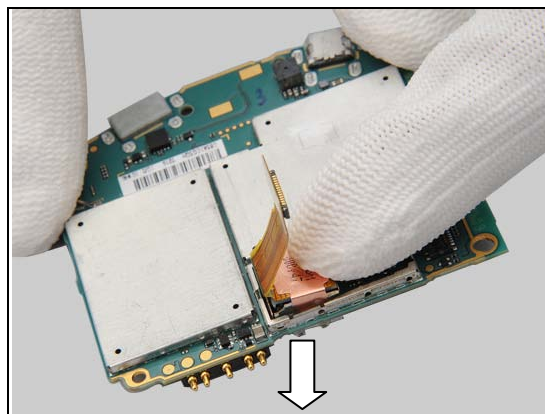
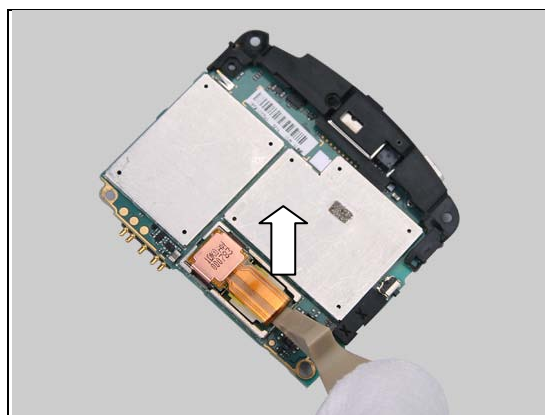
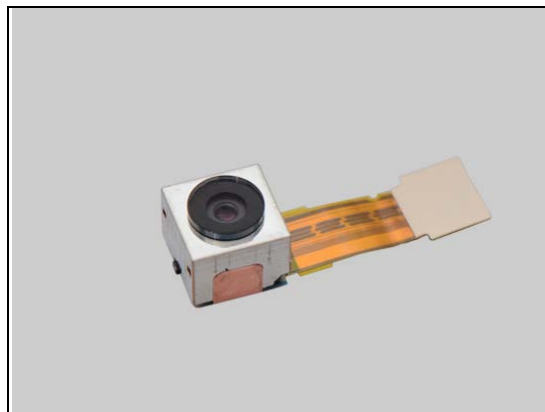
Follow the 5.2 – 5.8 Reassembly instructions!

REMOVAL

Unsnap the BtB connector with using a Front Opening Tool.

Push the Main Camera to go through the hole by fingers.

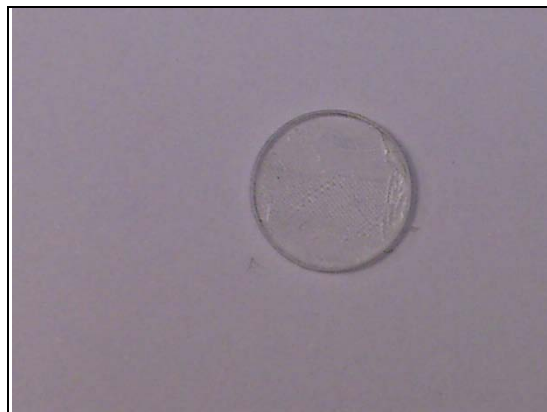
Remove it from the other side.



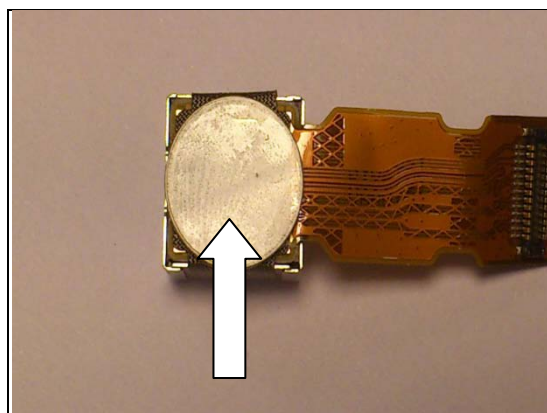
Replacement: Main Camera

INSTALLATION

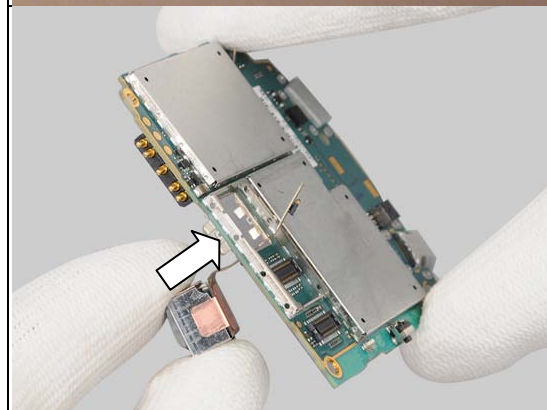
Take a new Camera Spacer.



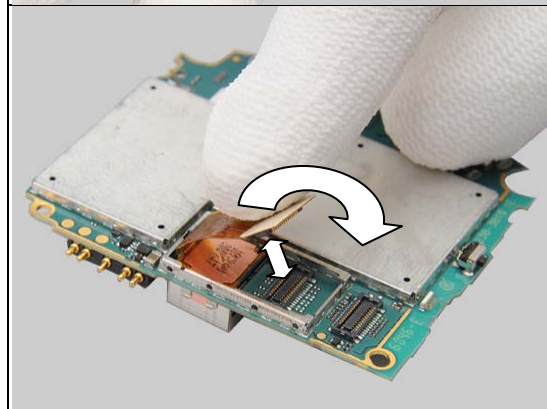
Place the Camera Spacer on the back of the camera with your fingers.



Insert the new Main Camera and go through the hole to its proper position.



Snap the BtB connector.



Replacement

4.24 Micro SD Label

Follow the 3.1 – 3.5 Disassembly instructions!

Carry out the Removal as described below.

Prepare the new Micro SD Label.

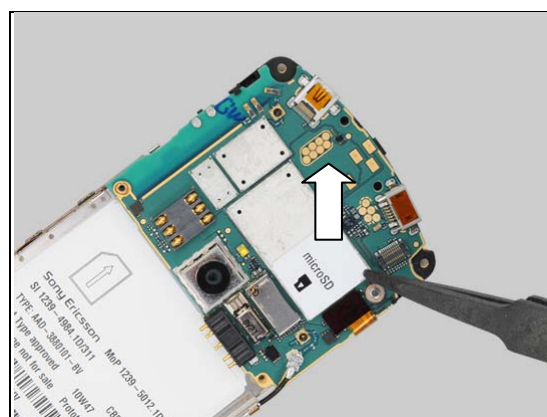
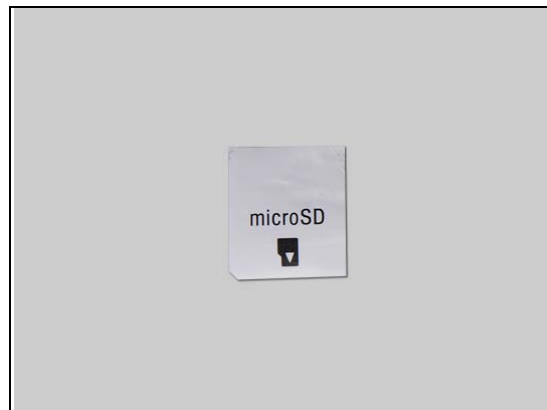
Carry out the Installation as described below.

Follow the 5.4 – 5.8 Reassembly instructions!

REMOVAL

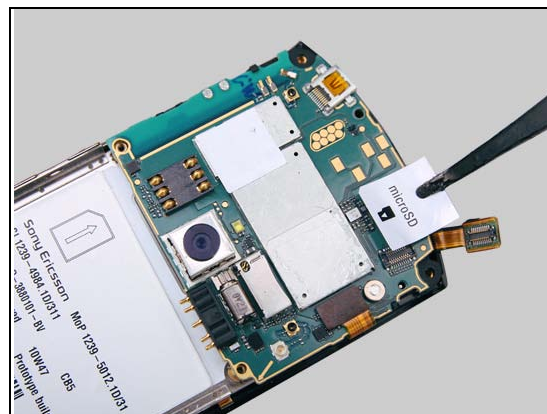
Remove the Micro SD Label from the Shield Can Lid.

Scrap! Not to be reused!

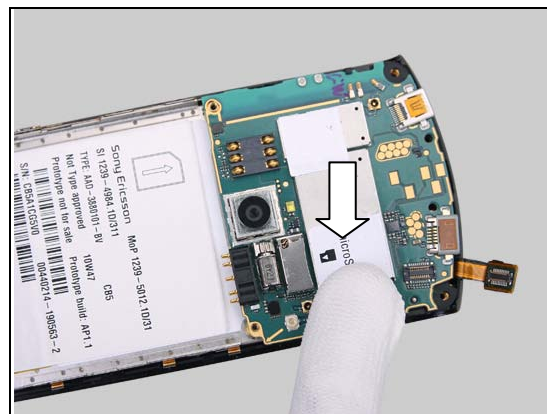


INSTALLATION

Stick the Micro SD Label on the proper position.



Press to assure its attachment.



Replacement

4.25 Microphone Net

Follow the 3.1 – 3.4 Disassembly instructions!

Carry out the Removal as described below.

Prepare the new Microphone Net.

Carry out the Installation as described below.

Follow the 5.5 – 5.8 Reassembly instructions!

REMOVAL

Detach the Microphone Net with using a pair of tweezers.

Scrap! Not to be reused!

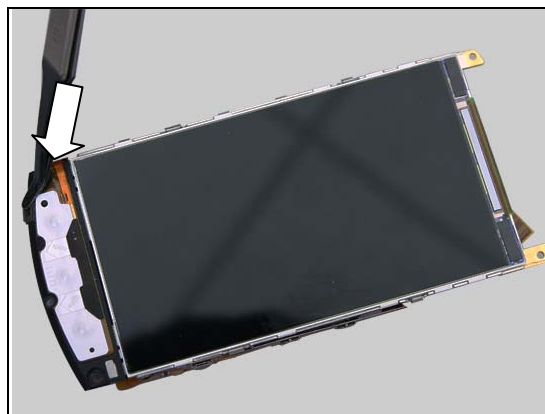


INSTALLATION

Place the new Microphone Net in place.



Press to assure its attachment.





Replacement

4.26 Multifunc Front Keys

Follow the 3.1 – 3.4 Disassembly instructions!

Carry out the Removal as described below.

Prepare the new Multifunc Front Keys.

Carry out the Installation as described below.

Follow the 5.5 – 5.8 Reassembly instructions!

REMOVAL

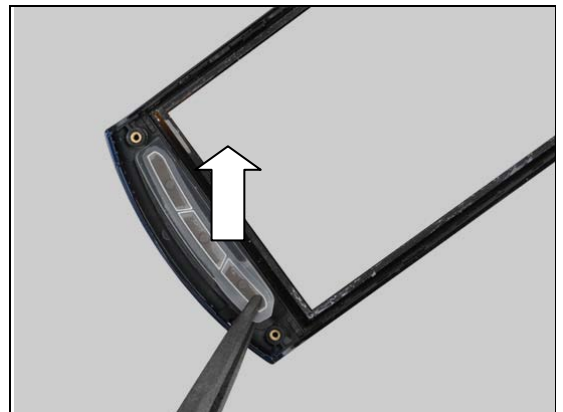
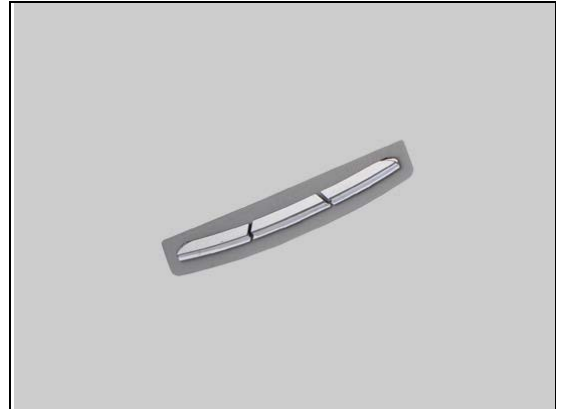
Push the Multifunc Front Keys from outside.

Remove it by using ESD Tweezers.

Scrap! Not to be reused!

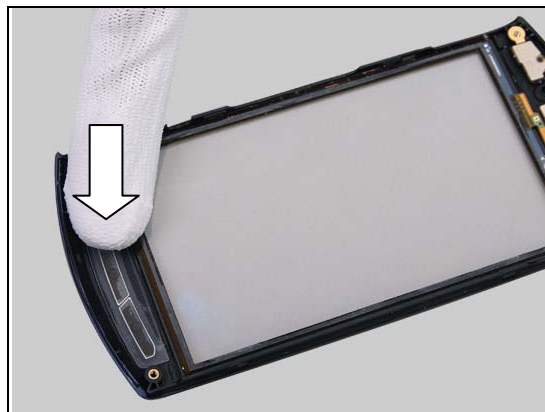
INSTALLATION

Place the new Multifunc Front Keys in place.



Replacement: Multifunc Front Keys

Press to its proper position.



Replacement

4.27 On/Off Key

Follow the 3.1 – 3.2 Disassembly instructions!

Carry out the Removal as described below.

Prepare the new On/Off Key.

Carry out the Installation as described below.

Follow the 5.7– 5.8 Reassembly instructions!

REMOVAL

Push the On/Off Key from outside.



Remove the On/Off Key.



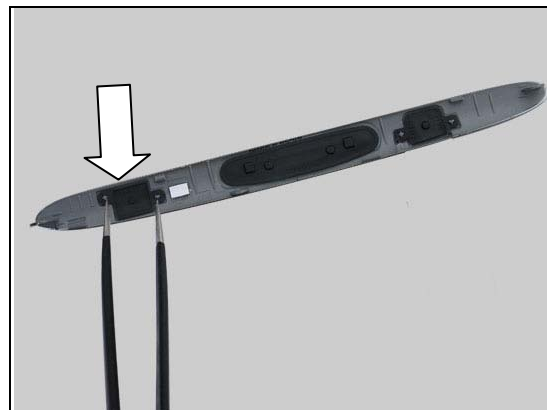
INSTALLATION

Place the new On/Off Key in place.



Replacement: On/Off Key

Press the On/Off Key into its proper position.



Replacement

4.28 Protective Tape Left

Follow the 3.1 Disassembly instructions!

Carry out the Removal as described below.

Prepare the new Protective Tape Left.

Carry out the Installation as described below.

Follow the 5.8 Reassembly instructions!

REMOVAL

Detach the Protective Tape Left with using the Flex Film Assy Tool.

Scrap! Not to be reused!



INSTALLATION

Place the new Protective Tape Left in place.



Press to assure its attachment by fingers.



Replacement

4.29 Protective Tape Right

Follow the 3.1 Disassembly instructions!

Carry out the Removal as described below.

Prepare the new Protective Tape Right.

Carry out the Installation as described below.

Follow the 5.8 Reassembly instructions!

REMOVAL

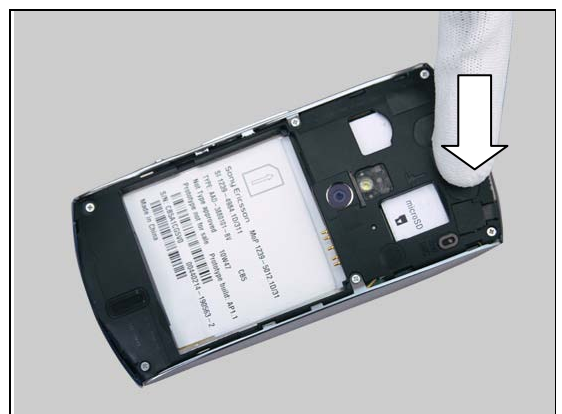
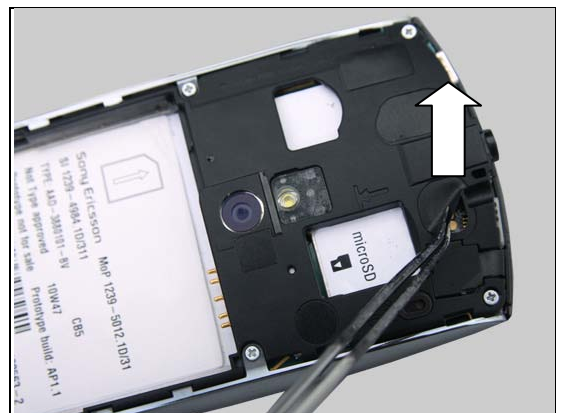
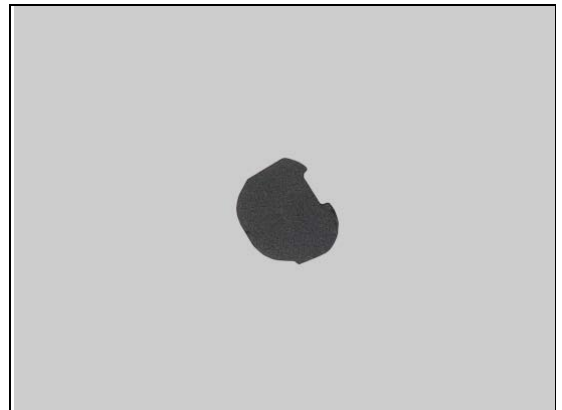
Detach the Protective Tape Right with using the Flex Film Assy Tool.

Scrap! Not to be reused!

INSTALLATION

Place the new Protective Tape Right in place.

Press to assure its attachment by fingers.



Replacement

4.30 Protective Tape Touch FPC

Follow the 3.1 – 3.3 Disassembly instructions!

Carry out the Removal as described below.

Prepare the new Protective Tape Touch FPC.

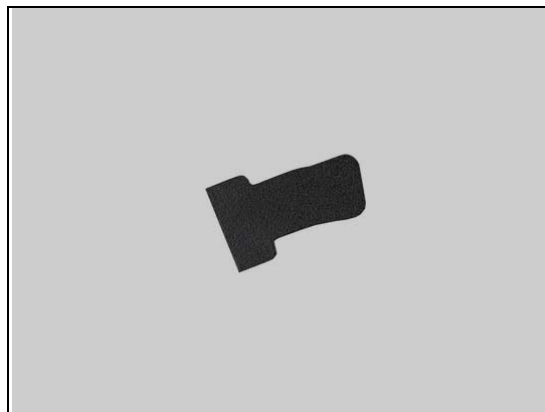
Carry out the Installation as described below.

Follow the 5.6 – 5.8 Reassembly instructions!

REMOVAL

Detach it with using Flex Film Assy Tool.

Scrap! Not to be reused!



INSTALLATION

Place the new Protective Tape Touch FPC in place.



Press to assure its attachment.





Replacement

4.31 RF Tape

Follow the 3.1 – 3.5 Disassembly instructions!

Carry out the Removal as described below.

Prepare the new RF Tape.

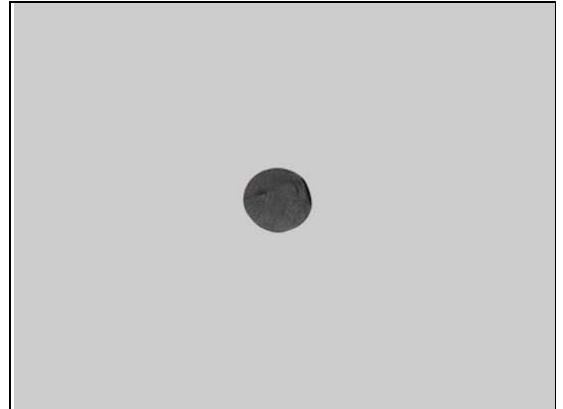
Carry out the Installation as described below.

Follow the 5.4 – 5.8 Reassembly instructions!

REMOVAL

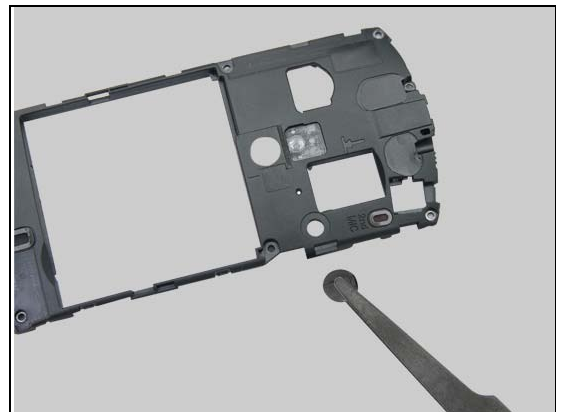
Insert and push against the RF Tape from the back side by using a Nylon Pointer.

Scrap! Not to be reused!

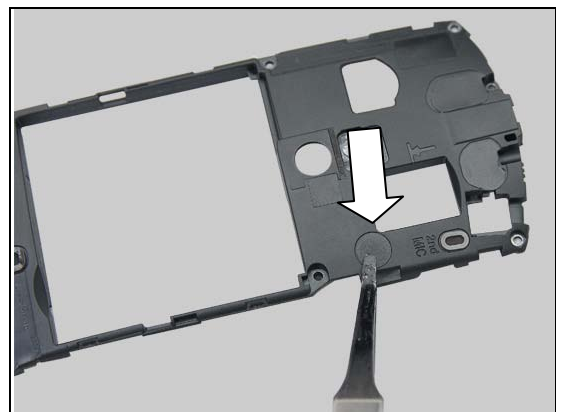


INSTALLATION

Prepare a new RF Tape in place.



Press it on proper position.



Replacement

4.32 Shield Can Lid Assy, Main Camera

Follow the 3.1 – 3.7 Disassembly instructions!

Carry out the Removal as described below.

Prepare the new Shield Can Lid Assy, Main Camera.

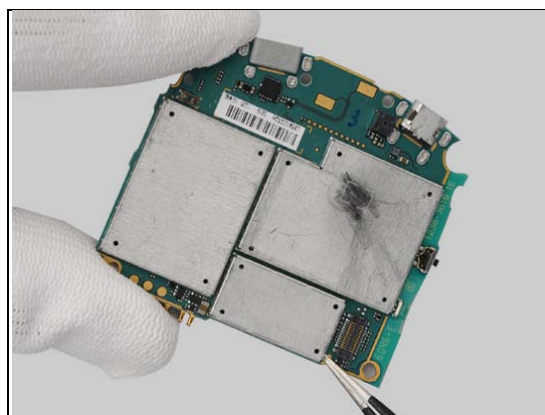
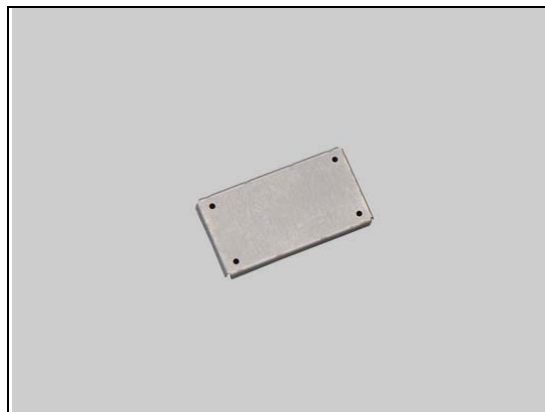
Carry out the Installation as described below.

Follow the 5.2 – 5.8 Reassembly instructions!

REMOVAL

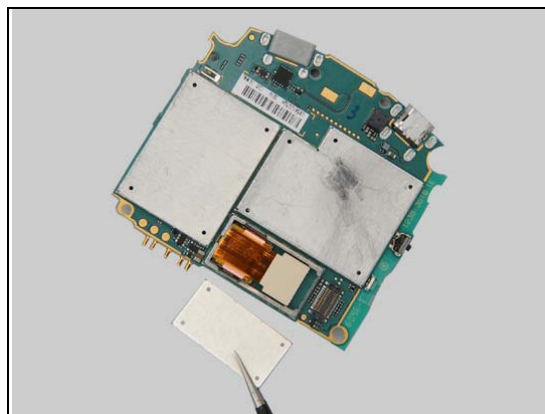
Unsnap the corners of the Shield Can Lid Assy, Main Camera with a pair of tweezers and remove it.

Scrap! Not to be reused!

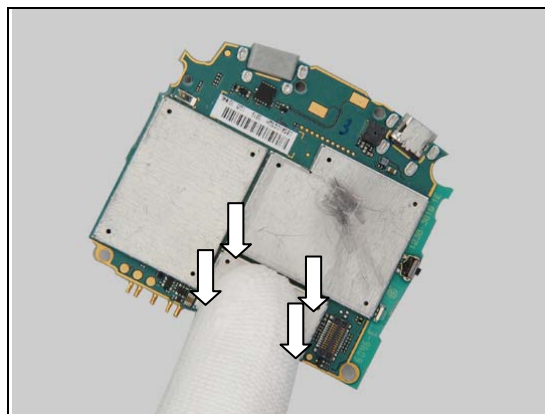


INSTALLATION

Put a new Shield Can Lid Assy, Main Camera in place.



Press to snap it.





Replacement

4.33 Shield Can Lid BB processor

Follow the 3.1 – 3.7 Disassembly instructions!

Follow the 4.17 Removal instructions!

Carry out the Removal as described below.

Prepare a new Shield Can Lid BB processor.

Carry out the Installation as described below.

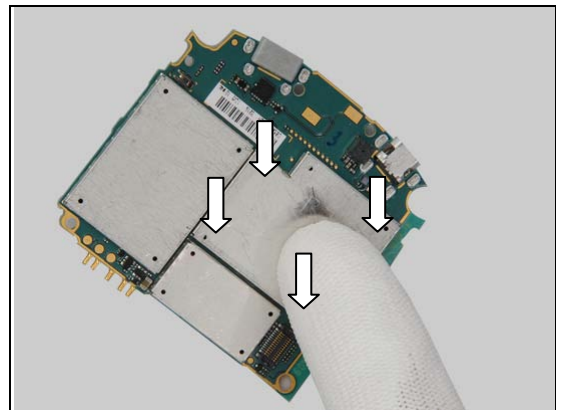
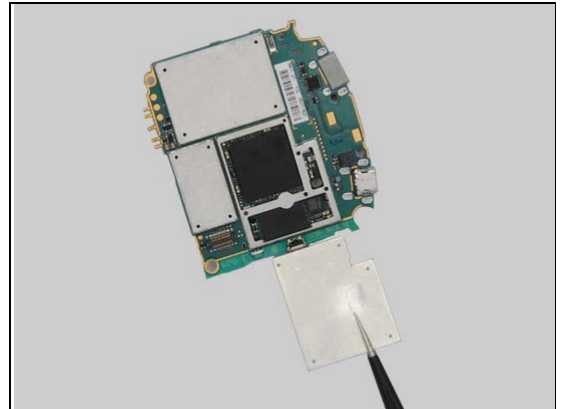
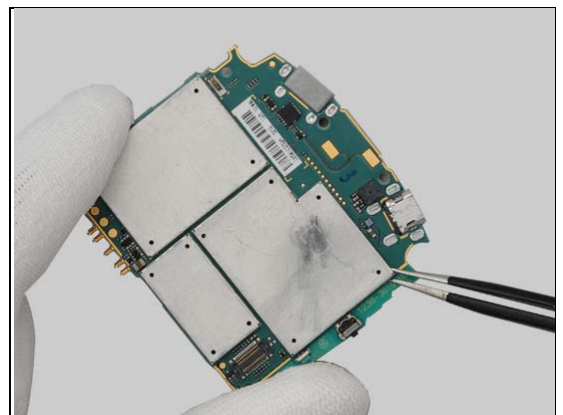
Follow the 4.17 Installation instructions!

Follow the 5.2 – 5.8 Reassembly instructions!

REMOVAL

Unsnap the corners of the Shield Can Lid BB processor with a pair of tweezers and remove it.

Scrap! Not to be reused!



INSTALLATION

Put a new Shield Can Lid BB processor in place.

Press to snap it.



Replacement

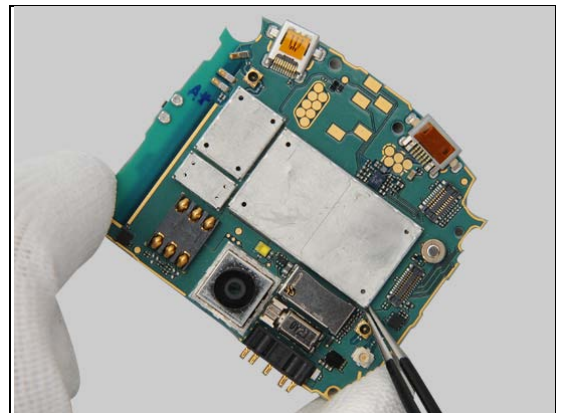
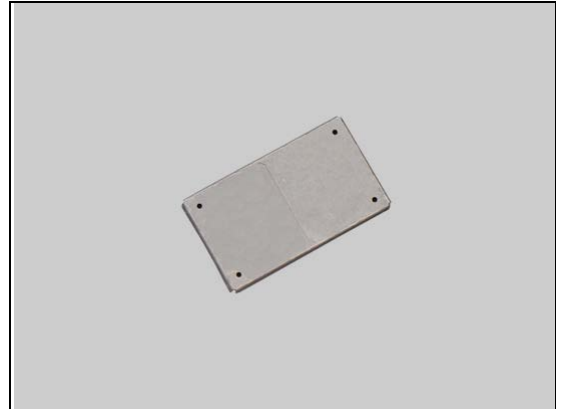
4.34 Shield Can Lid BB secondary

Follow the 3.1 – 3.7 Disassembly instructions!
Carry out the Removal as described below.
Prepare the new Shield Can Lid BB secondary.
Carry out the Installation as described below.
Follow the 5.2 – 5.8 Reassembly instructions!

REMOVAL

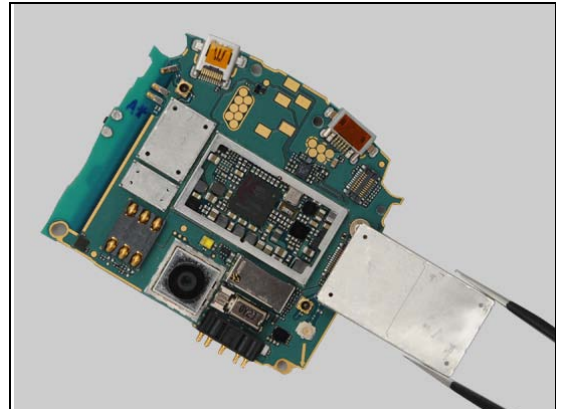
Unsnap the corners of the Shield Can Lid BB secondary with a pair of tweezers and remove it.

Scrap! Not to be reused!

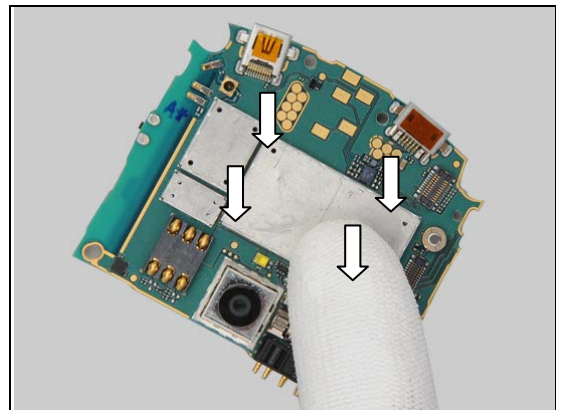


INSTALLATION

Put a new Shield Can Lid BB secondary in place.



Press to snap it.



Replacement

4.35 Shield Can Lid BT/WLAN

Follow the 3.1 – 3.7 Disassembly instructions!

Carry out the Removal as described below.

Prepare the new Shield Can Lid BT/WLAN.

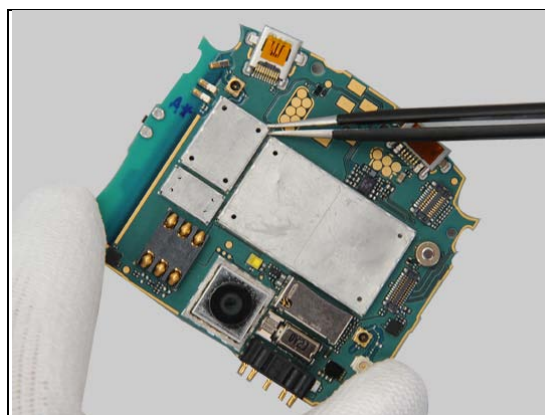
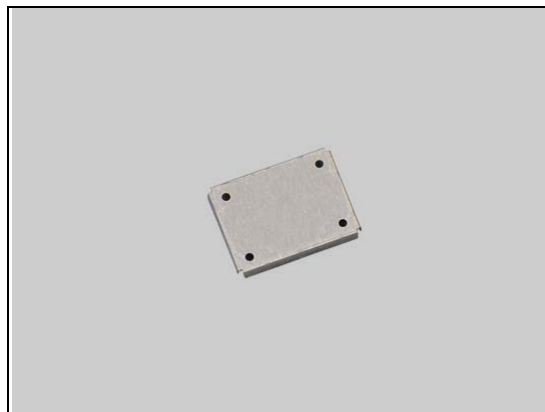
Carry out the Installation as described below.

Follow the 5.2 – 5.8 Reassembly instructions!

REMOVAL

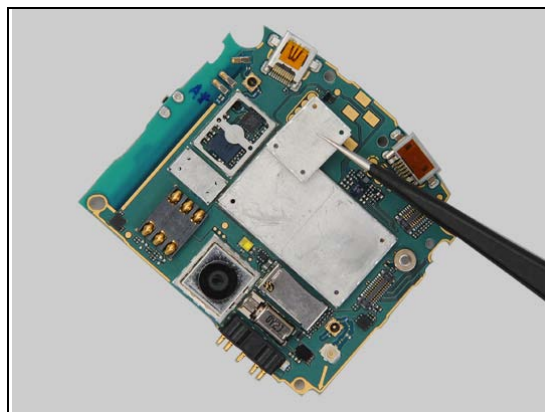
Unsnap the corners of the Shield Can Lid BT/WLAN with a pair of tweezers and remove it.

Scrap! Not to be reused!

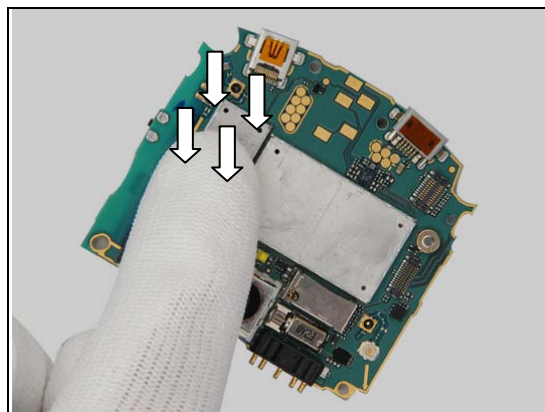


INSTALLATION

Put a new Shield Can Lid BT/WLAN in place.



Press to snap it.





Replacement

4.36 Shield Can Lid GPS

Follow the 3.1 – 3.7 Disassembly instructions!

Carry out the Removal as described below.

Prepare the new Shield Can Lid GPS.

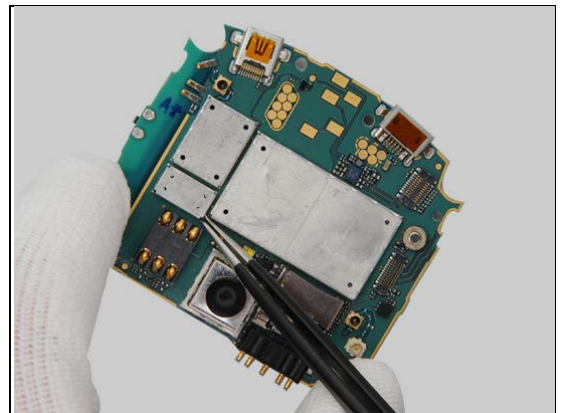
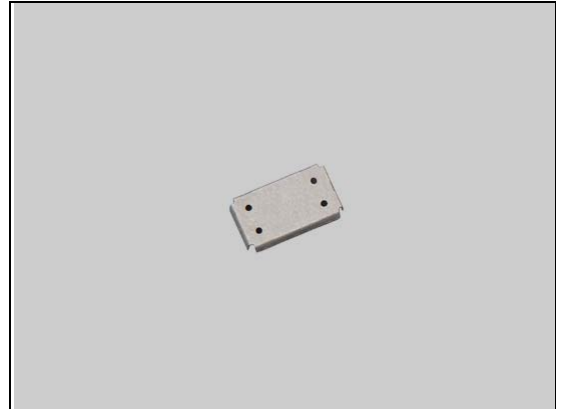
Carry out the Installation as described below.

Follow the 5.2 – 5.8 Reassembly instructions!

REMOVAL

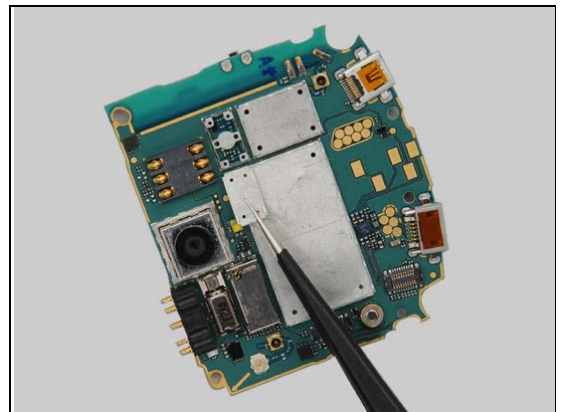
Unsnap the corners of the Shield Can Lid GPS with a pair of tweezers and remove it.

Scrap! Not to be reused!

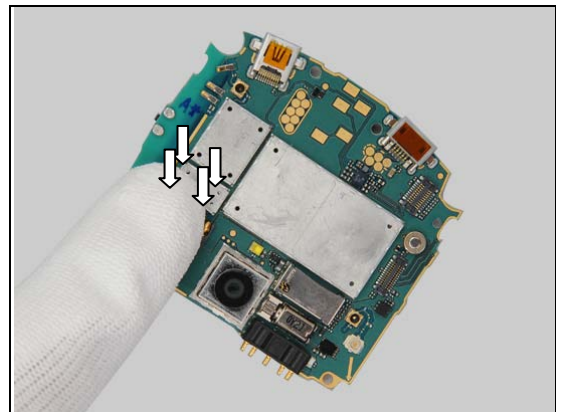


INSTALLATION

Put a new Shield Can Lid GPS in place.



Press to snap it.





Replacement

4.37 Shield Can Lid RF

Follow the 3.1 – 3.7 Disassembly instructions!

Carry out the Removal as described below.

Prepare the new Shield Can Lid RF.

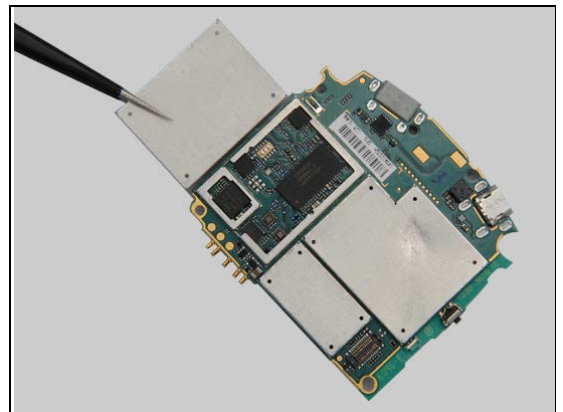
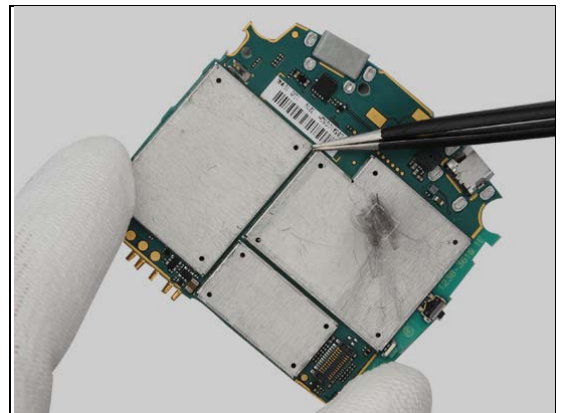
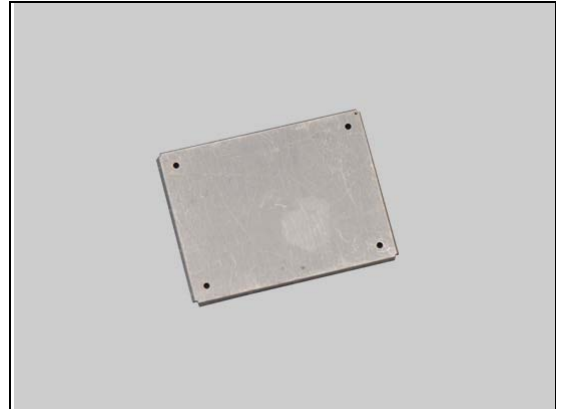
Carry out the Installation as described below.

Follow the 5.2 – 5.8 Reassembly instructions!

REMOVAL

Unsnap the corners of the Shield Can Lid RF with a pair of tweezers and remove it.

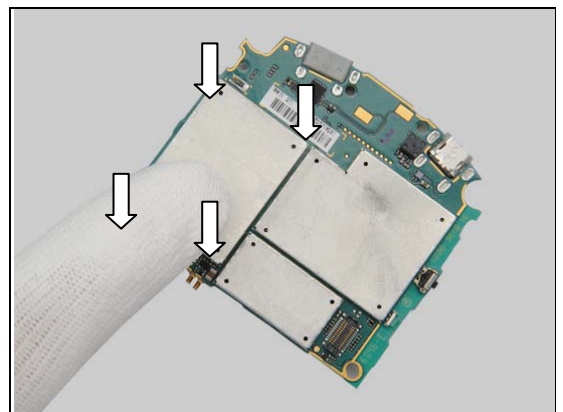
Scrap! Not to be reused!



INSTALLATION

Put a new Shield Can Lid RF in place.

Press to snap it.



Replacement

4.38 SIM Open Label

Follow the 3.1 – 3.5 Disassembly instructions!

Carry out the Removal as described below.

Prepare the new SIM Open Label.

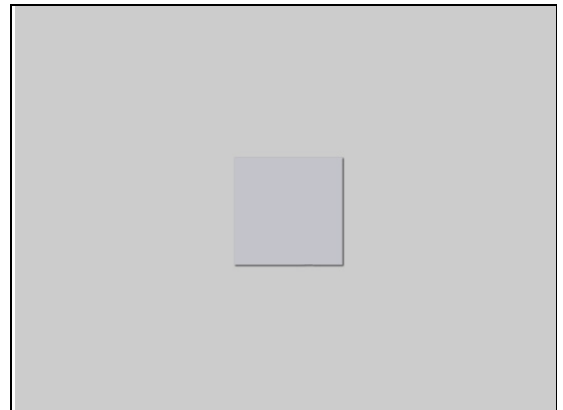
Carry out the Installation as described below.

Follow the 5.4 – 5.8 Reassembly instructions!

REMOVAL

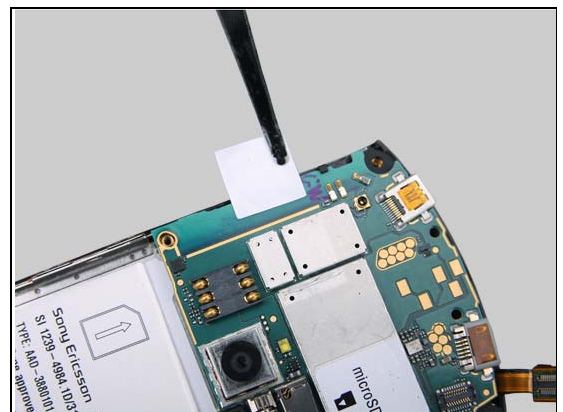
Remove the SIM Open Label from the Shield Can Lid.

Scrap! Not to be reused!

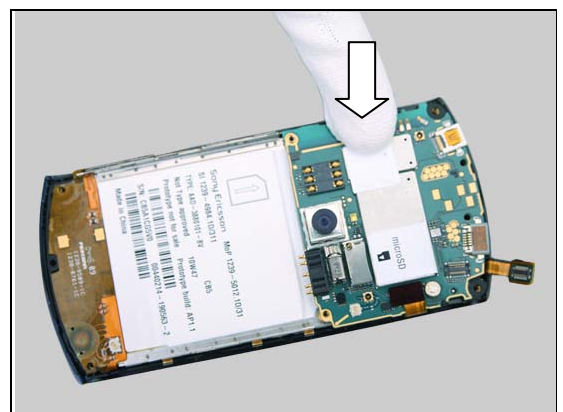


INSTALLATION

Stick the SIM Open Label on the proper position.



Press to assure its attachment.





Replacement

4.39 Speaker & Gasket Speaker gasket upper

Follow the 3.1 – 3.5 Disassembly instructions!

Carry out the Removal as described below.

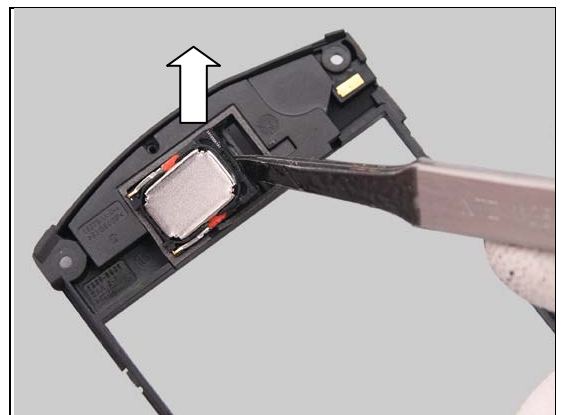
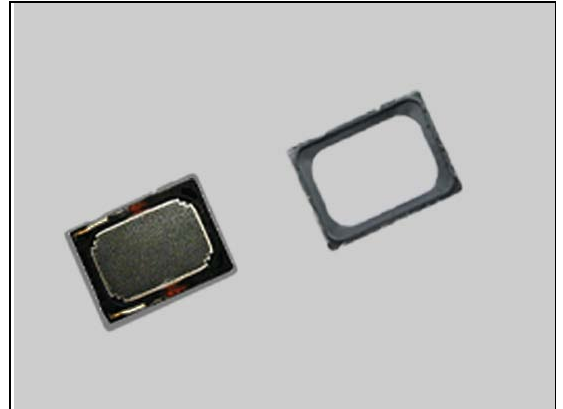
Prepare the new Speaker & Gasket Speaker gasket upper.

Carry out the Installation as described below.

Follow the 5.4 – 5.8 Reassembly instructions!

REMOVAL

Lift up the Speaker with insert the Flex Film Assy Tool.



Remove the Gasket Speaker gasket upper.

Scrap! Not to be reused!



INSTALLATION

Prepare a new Gasket Speaker gasket upper in place.



Replacement: Speaker & Gasket Speaker gasket upper

Prepare a new Speaker in place.

Note the direction of pins!



Press to snap the Gasket Speaker gasket upper.



Press along the surface the make the Speaker securely attached.

Do not press on the pads!



Replacement

4.40 Touch Panel

Follow the 3.1– 3.4 Disassembly instructions!

Carry out the Removal as described below.

Prepare the new Touch Panel.

Carry out the Installation as described below.

Follow the 4.18 Installation instructions!

Follow the 5.5 – 5.8 Reassembly instructions!

REMOVAL

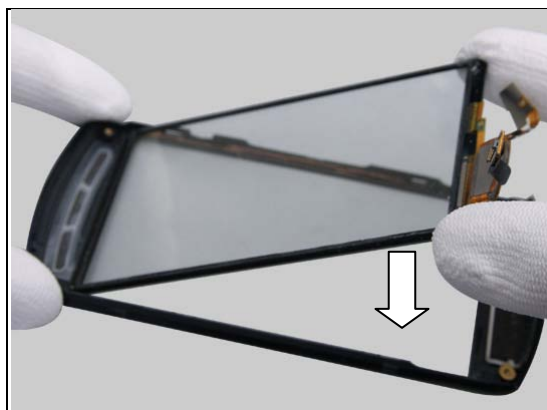
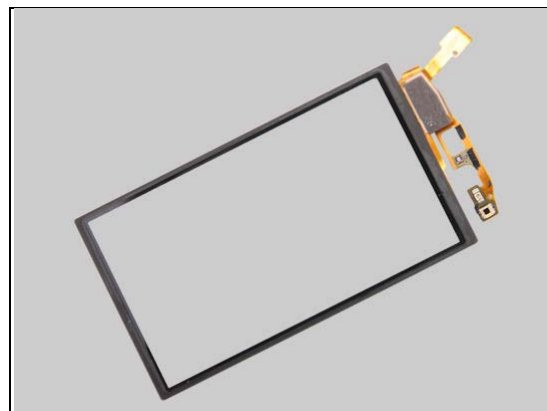
Push the Touch Panel to detach it from the Cover Front Assy.

Remove it gently

INSTALLATION

Place the new Touch Panel in place.

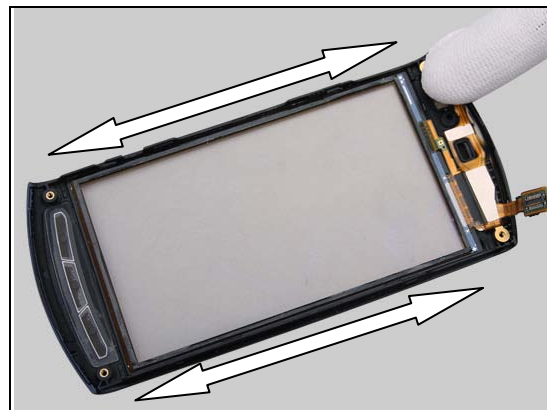
Do not touch the surface of the Touch Panel!



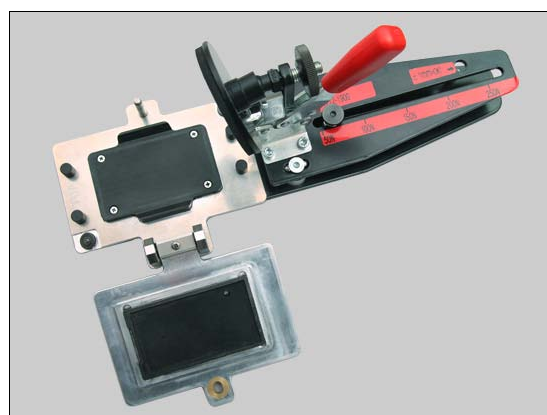
Replacement: Touch Panel

Press the all around to assure its proper position.

Do not touch the surface of the Touch Panel!

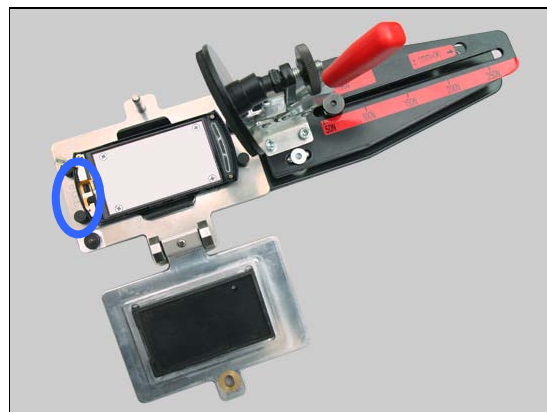


Install the Pressure Fixture onto the Pressure Tool and adjust the pressure to 60 N.

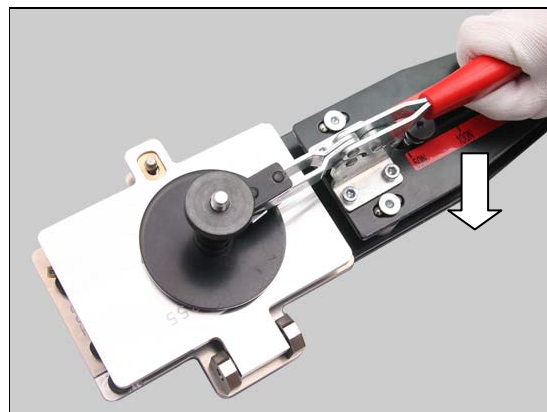


Place the phone onto the Pressure Fixture.

Let the phone follow direction of "Top" position on Pressure Fixture.



Close the Pressure Fixture and using the Pressure Tool to press the Main Window for 5 seconds.



Replacement

4.41 Volume Key

Follow the 3.1 – 3.2 Disassembly instructions!

Carry out the Removal as described below.

Prepare the new Volume Key.

Carry out the Installation as described below.

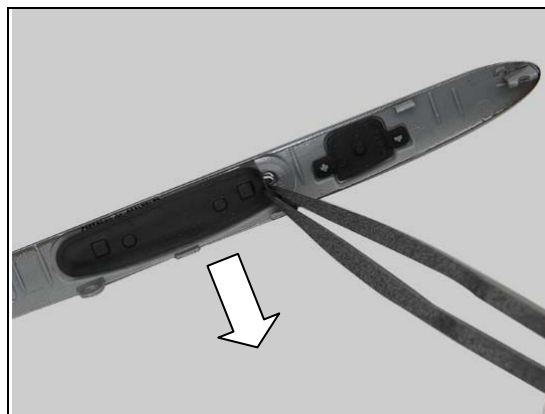
Follow the 5.7 – 5.8 Reassembly instructions!

REMOVAL

Push the Volume Key from outside.



Remove the Volume Key.



INSTALLATION

Place the new Volume Key in place and press it to assure its attachment.



Replacement

4.42 Water Indicator 3*3

Follow the 3.1 – 3.5 Disassembly instructions!

Carry out the Removal as described below.

*Prepare the new Water Indicator 3*3.*

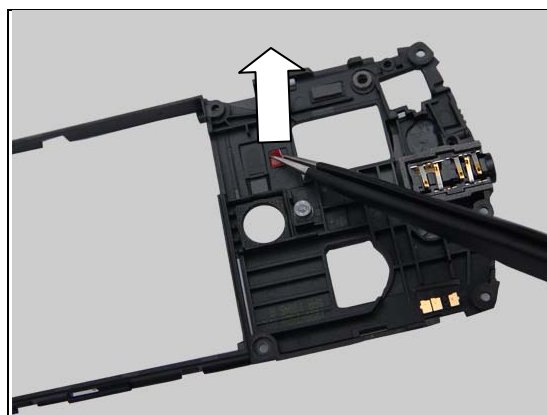
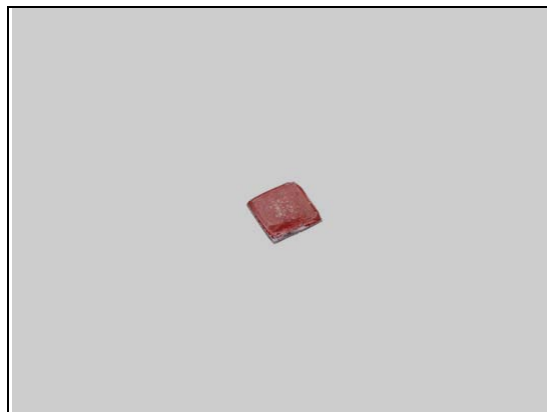
Carry out the Installation as described below.

Follow the 5.4 – 5.8 Reassembly instructions!

REMOVAL

Detach it by using a pair of tweezers.

Scrap! Not to be reused!

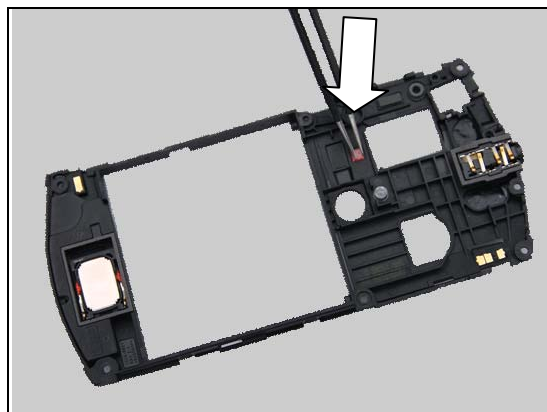


INSTALLATION

Place the new Water Indicator 3*3 in place.



Press to assure its attachment.



4.43 Gasket Flash Led

Follow the 3.1 Disassembly instructions!

Carry out the Removal as described below.

Prepare the new Gasket Flash Led

Carry out the Installation as described below.

Follow the 5.8 Reassembly instructions!

REMOVAL

Detach it by using a pair of tweezers

INSTALLATION

Place the new Gasket Flash Led in place using a pair of tweezers.





Replacement: Board Swap

4.44 Board Swap

4.44.1 Board Swap- Replacement

Follow the 3.1 – 3.5, 3.6 Cable Coax on PBA, and 3.7 Disassembly instructions.

Replace the Swap Board.

Reuse the Camera.

Add Gasket conductive 4.17, Gasket RGB led 4.20, Liquid Indicator 4.23, Micro SD label 4.25, Sim open label 4.39

Follow the 5.1 - 5.8 Reassembly instructions.

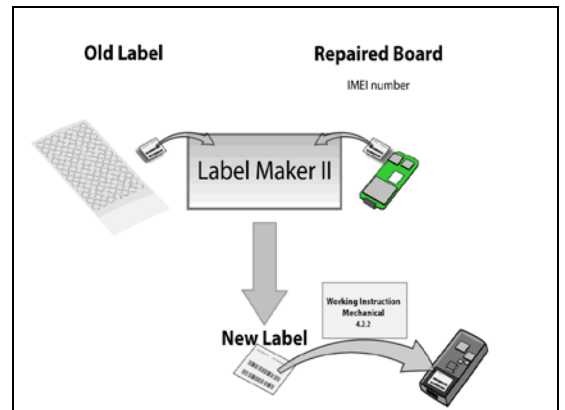
Startup the unit to initialize settings, before performing Customize Phone in Emma



4.44.2 Board Swap – Change Label

CHANGE LABEL

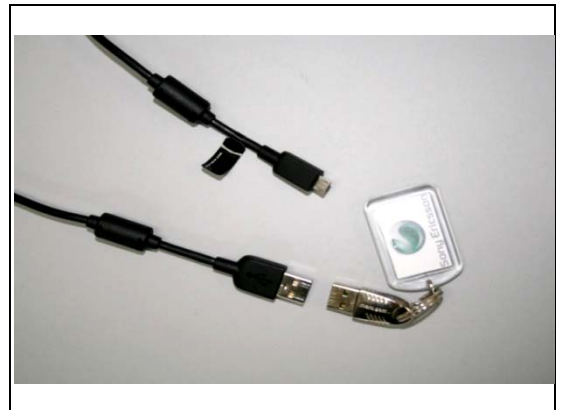
Follow the instructions in the Generic Repair Manual – Build swap for change of label.



4.44.3 Board Swap – Customize of Software

CUSTOMIZE OF SOFTWARE

Follow the instructions in the Generic Repair Manual – Build swap for customization of the software.

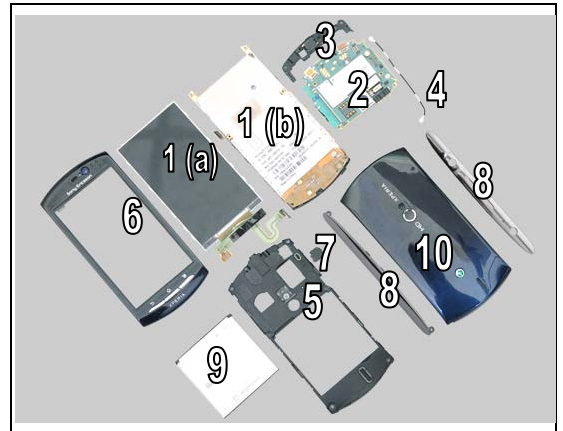




5 Reassembly

The reassembly is done in the following order:

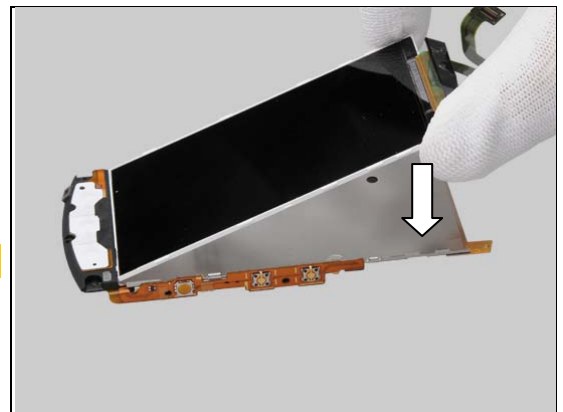
1. Display (a) & Carrier Metal LCM Carrier Assembly (b)
2. Main PBA
3. Carrier Connector support assembly
4. Cable Coax
5. Carrier Inner frame assembly
6. Cover Front Assy
7. Cap Touch flex assy
8. Cover Right Side panel right assembly & Cover Left Side Panel
9. Battery
10. Battery Cover



5.1 Display

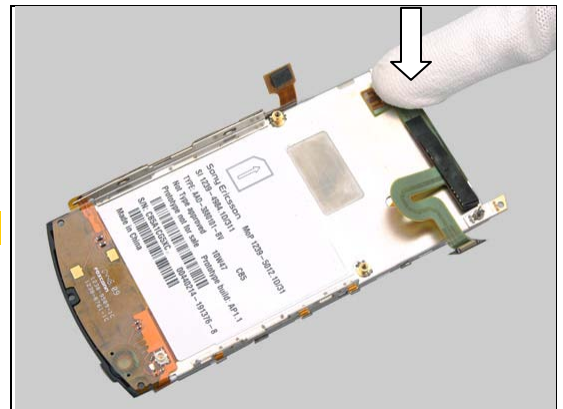
Place the Display into Carrier Metal LCM Carrier Assembly.

Do not touch the front of Display.



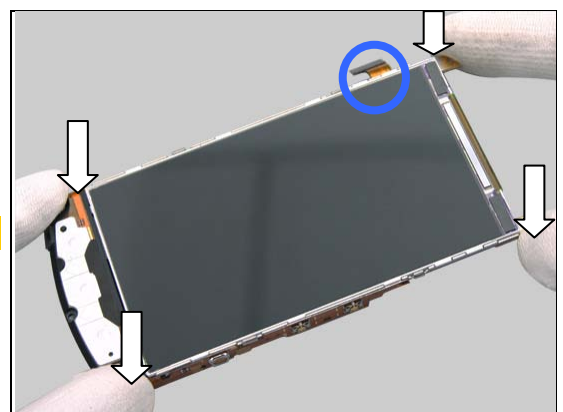
Turn it over and press the flex film part.

Do not touch the black tape area!



Press the corners with fingers to secure its position.

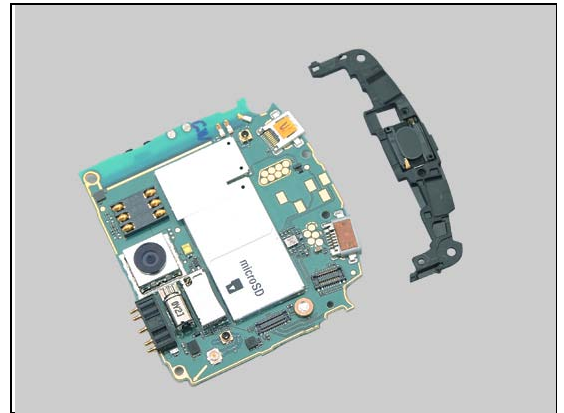
The flex film should be pulled out!



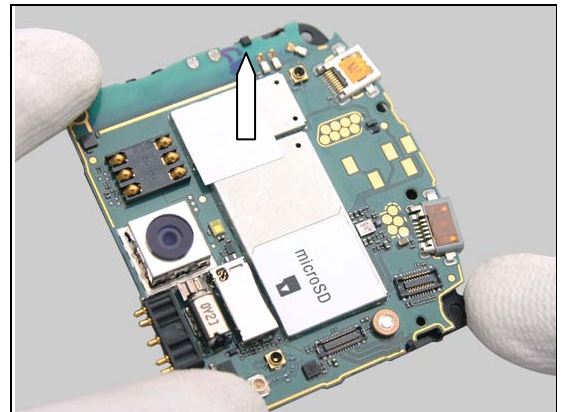
Reassembly

5.2 Carrier Connector support assembly & Main PBA

Place the Carrier Connector support assembly in place

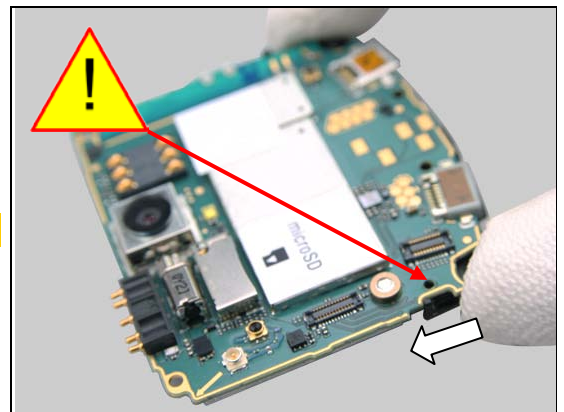


Fix the upper hook as shown.

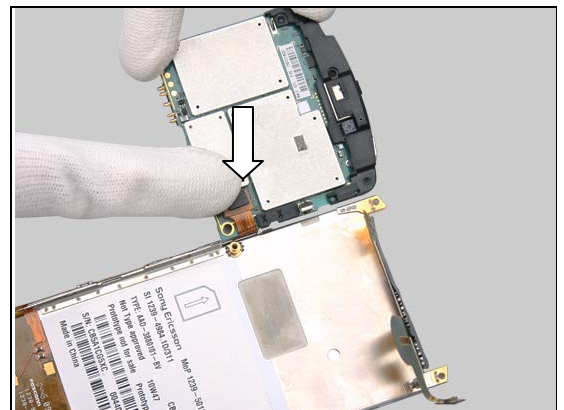


Push the bottom hook in place.

Note the guiding hole!



Connect the BtB connector.



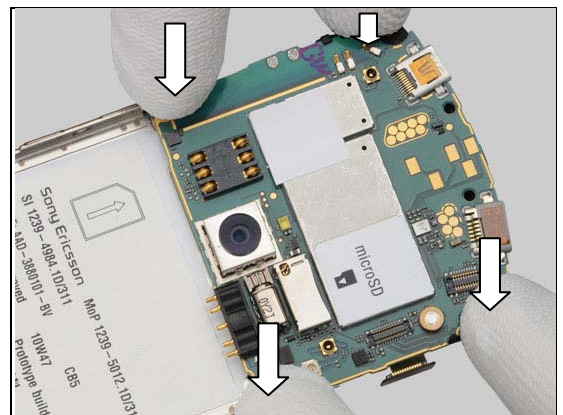
Reassembly

Turn over the Main PBA.

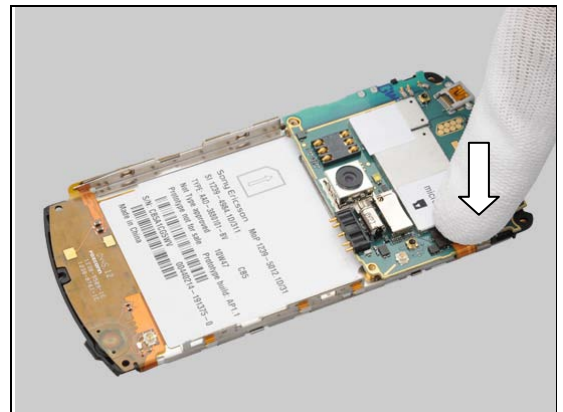
Note the flex film of Display should be smooth!



Press the Main PBA to snap it.



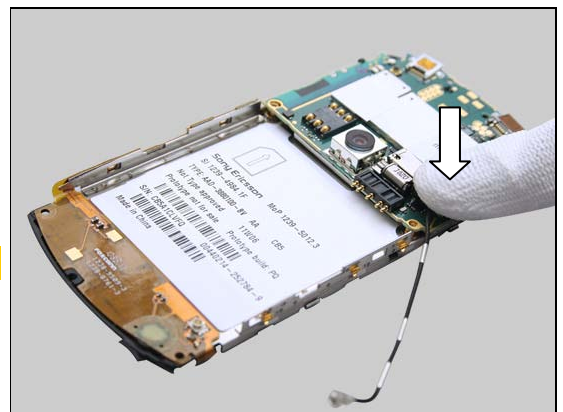
Snap the Display connector and press to snap it.



5.3 Cable Coax

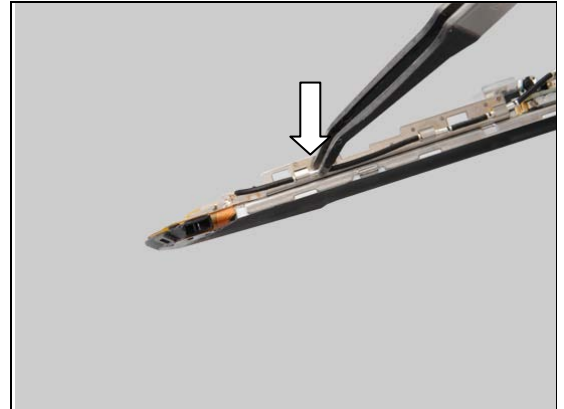
Press the connector to snap it.

Listen to the click sound.



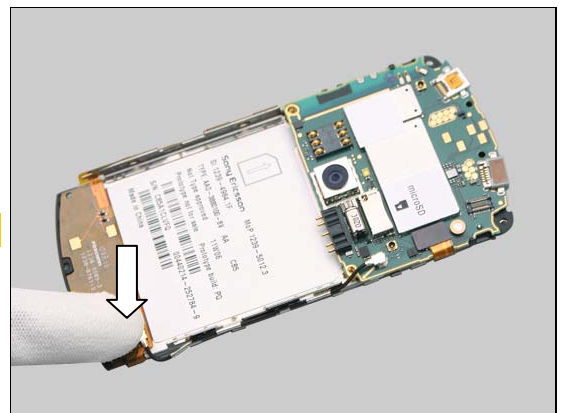
Reassembly

Put the Cable Coax in the fixing points by using the Flex Film Assy Tool.



Press another connector to snap it.

Listen to the click sound.

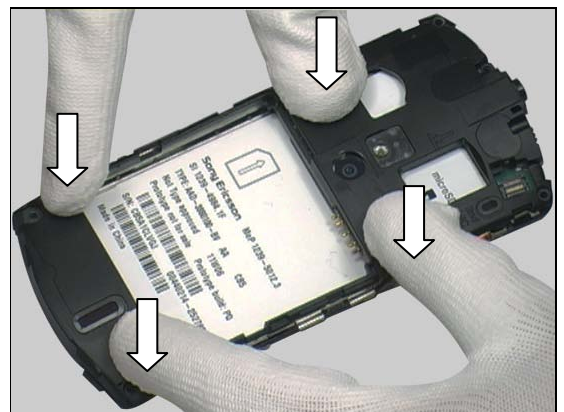


5.4 Carrier Inner frame assembly

Place the Carrier Inner frame assembly in place.



Press the corner, the middle of Carrier Inner frame assembly to snap it.





Reassembly

5.5 Cover Front Assy

Apply $12 \pm 10\%$ Ncm torque when tightening the two Screw
Other Len:5.7 Diam:1.4 with T5.

Take new screws!



Apply $12 \pm 10\%$ Ncm torque when tightening the Screw Torx
4IP Len:4.5 Diam:1.4 with T5.

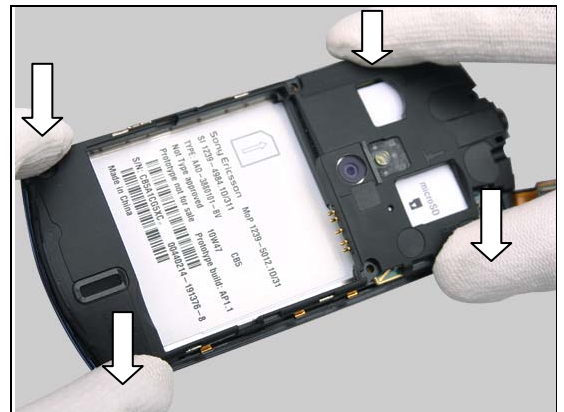
Take new screws!



Place the Cover Front Assy in place.



Press to snap the hooks.





Reassembly

Snap the BtB connector.



5.6 Cap Touch flex assy

Press the Cap Touch flex assy in place.

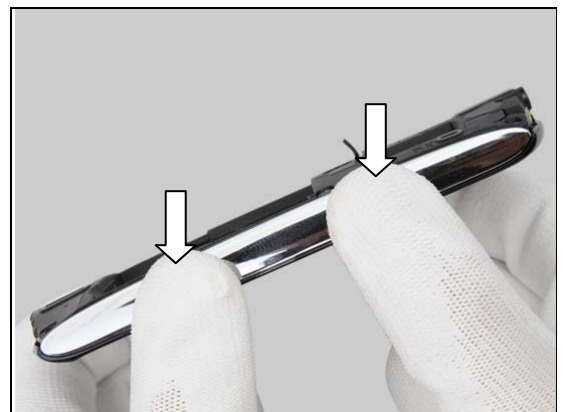


5.7 Cover Left Side Panel & Cover Right Side panel right assembly

Put the Cover Right Side panel right assembly in Place.



Press gently to snap it.



Reassembly

Put the Cover Left Side Panel in Place.



Press gently to snap it.



5.8 Battery Cover

Apply $10 \pm 10\%$ Ncm torque when tightening the Screw
Phillips Diam:1.4 with Bits (JCIS No 0).

Take new screws!



Apply $10 \pm 10\%$ Ncm torque when tightening the five Screw
Phillips Len:5.0 Diam:1.4 M1.4 L=5 with Bits (JCIS No 0).

Take new screws!



Reassembly

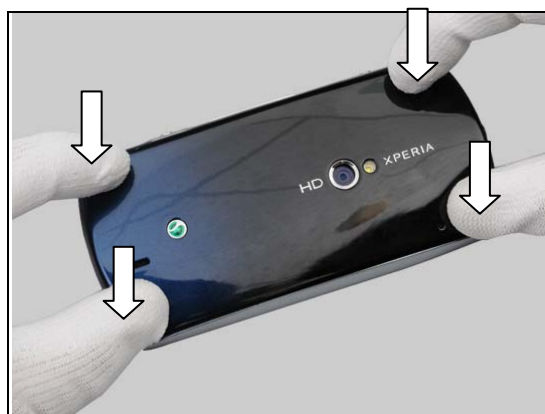
Put the Battery in place and press it into its cavity.



Put the Battery Cover in place.



Press to snap it.





6 Revision History

Rev.	Date	Changes / Comments
1	2011-Oct-03	Initial release